

## Examples of Economics Charts from Thechartstore.com

### Economics

#### Banking System

1. Money Supply - Weekly from as early as 1976
2. Assets & Liabilities of Commercial Banks in the United States - Monthly from as early as 1947

#### Consumer

3. Balance Sheet of Households and Nonprofit Organizations - Quarterly from 1952
4. Retail and Food Services Sales - Monthly from 1992

#### Debt

5. Credit Market Debt Outstanding, by sector - Quarterly from 1952
6. Credit Market Debt Outstanding, Financial sector - Quarterly from 1952

#### Employment

7. Unemployment Insurance Claims - Weekly from 1967
8. Employment Situation - Monthly from as early as 1939

#### Gross Domestic Product (GDP)

9. Real GDP - Quarterly from 1947
10. Federal Government Receipts & Expenditures - Quarterly from 1947

#### Industrial Production and Capacity Utilization

11. Industrial Production - Monthly
12. Capacity Utilization - Monthly

#### Inflation

13. Consumer Price Indices (CPI) - Monthly from as early as 1913
14. Other Inflation Measures - Monthly from as early as 1959

#### International Trade

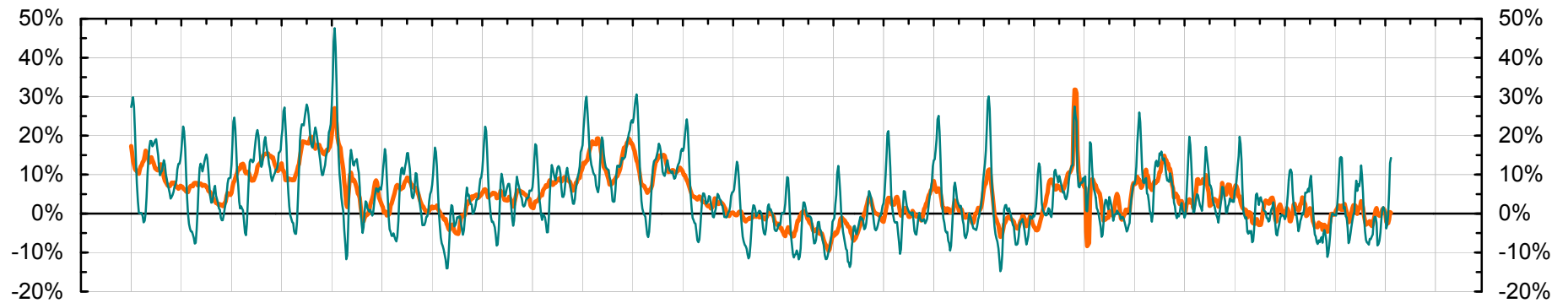
15. International Trade in Goods - Monthly from 1985

#### Surveys

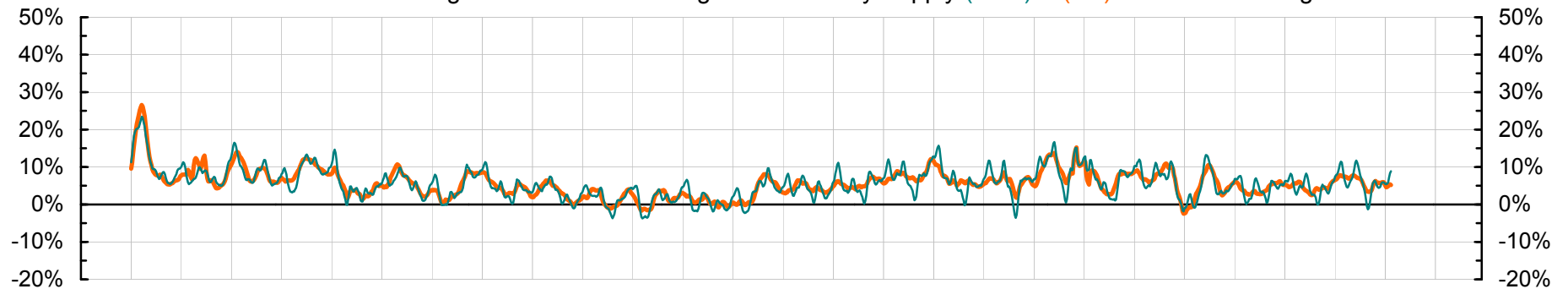
16. ISM Manufacturing PMI and Diffusion Indexes - Monthly from 1950

The information contained in this publication has been gathered from sources believed to be reliable, but Thechartstore.com makes no representations as to the accuracy or completeness of such information. This publication is further subject to the terms of the disclaimer and limitations of liability contained on the last page of this report.

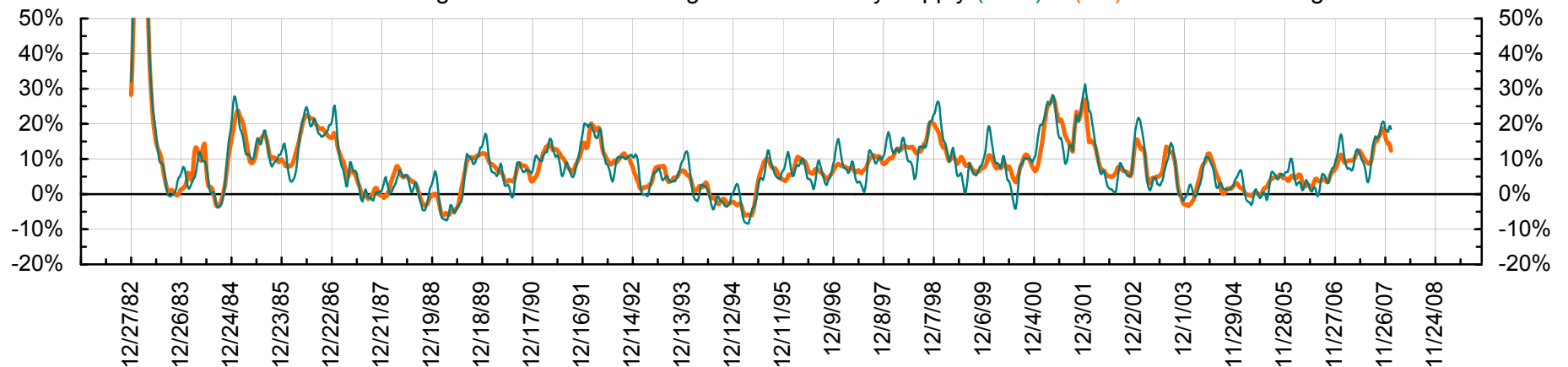
Annual rate of change of the 4 week average of M1 Money Supply (NSA) & (SA) from 13 weeks ago



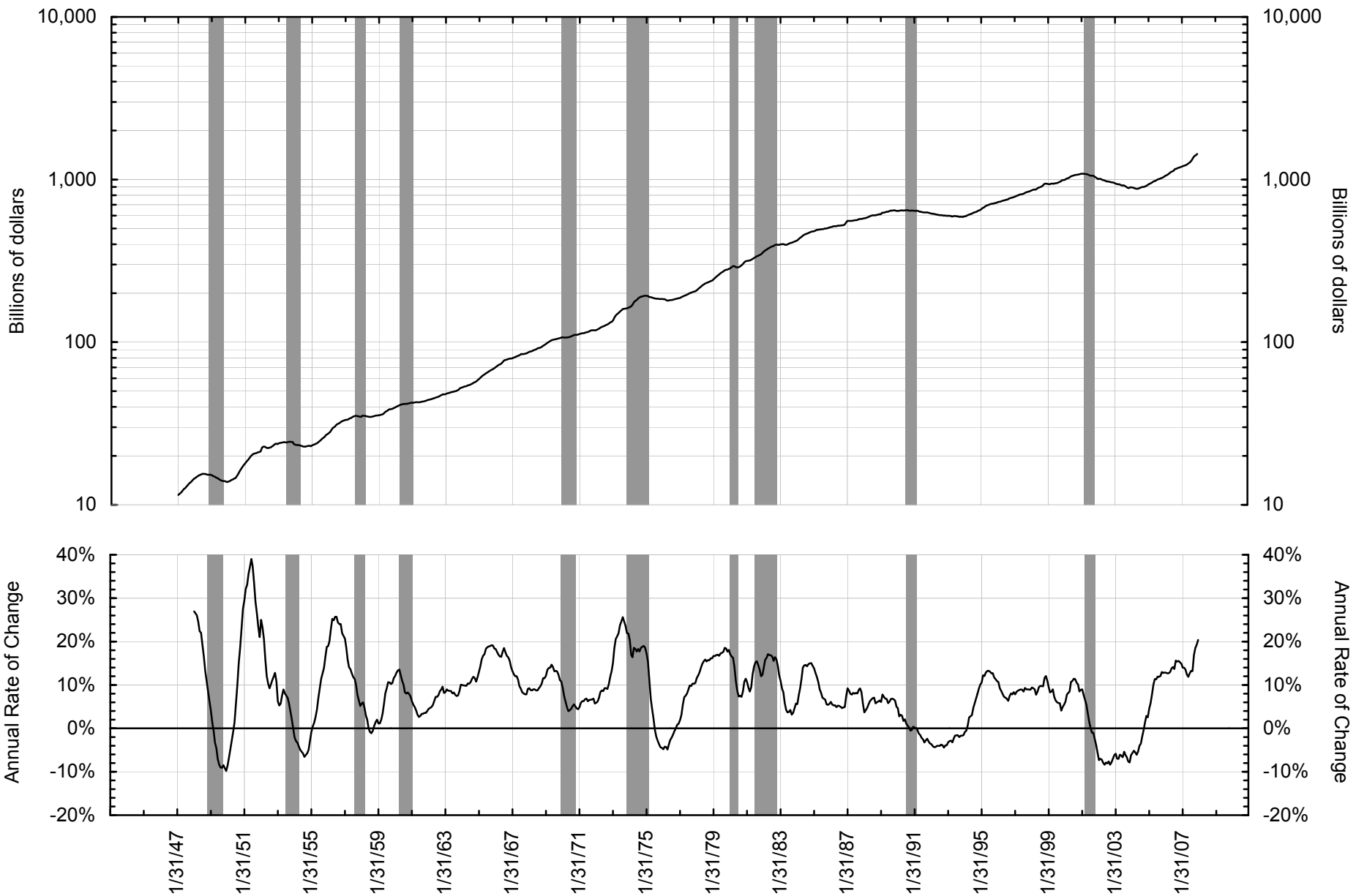
Annual rate of change of the 4 week average of M2 Money Supply (NSA) & (SA) from 13 weeks ago



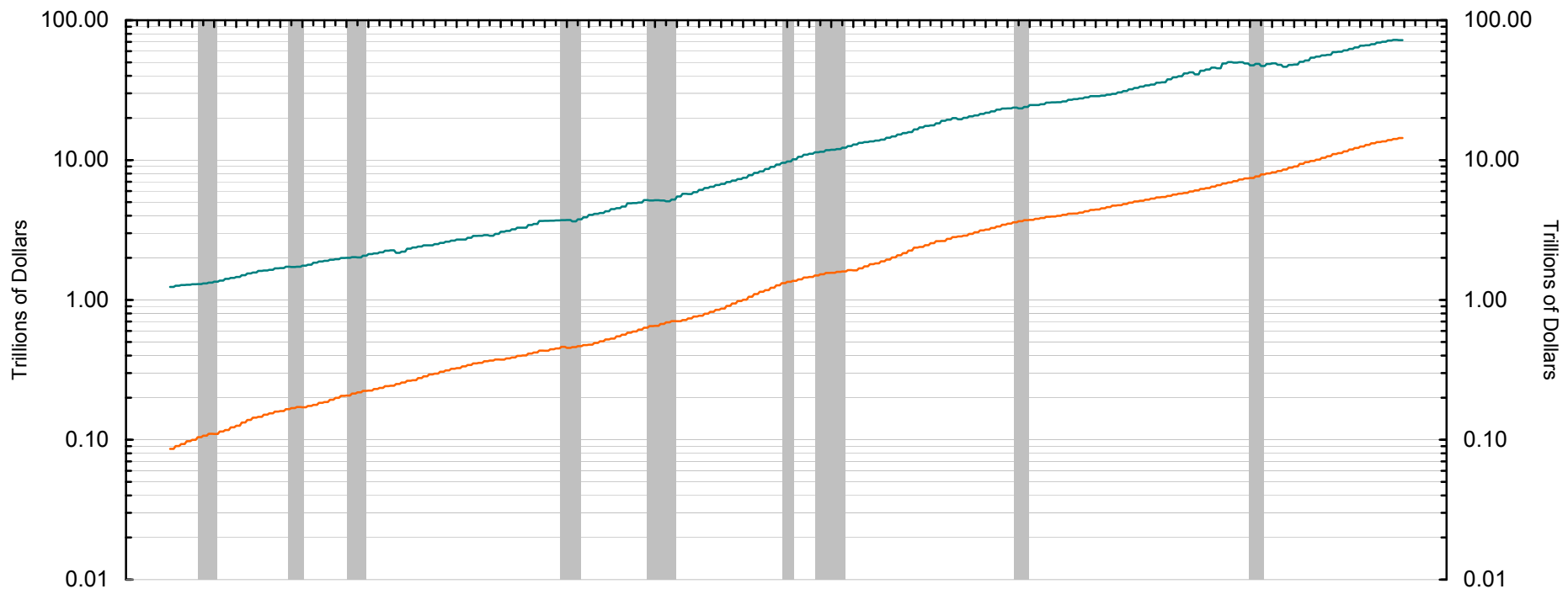
Annual rate of change of the 4 week average of MZM Money Supply (NSA) & (SA) from 13 weeks ago



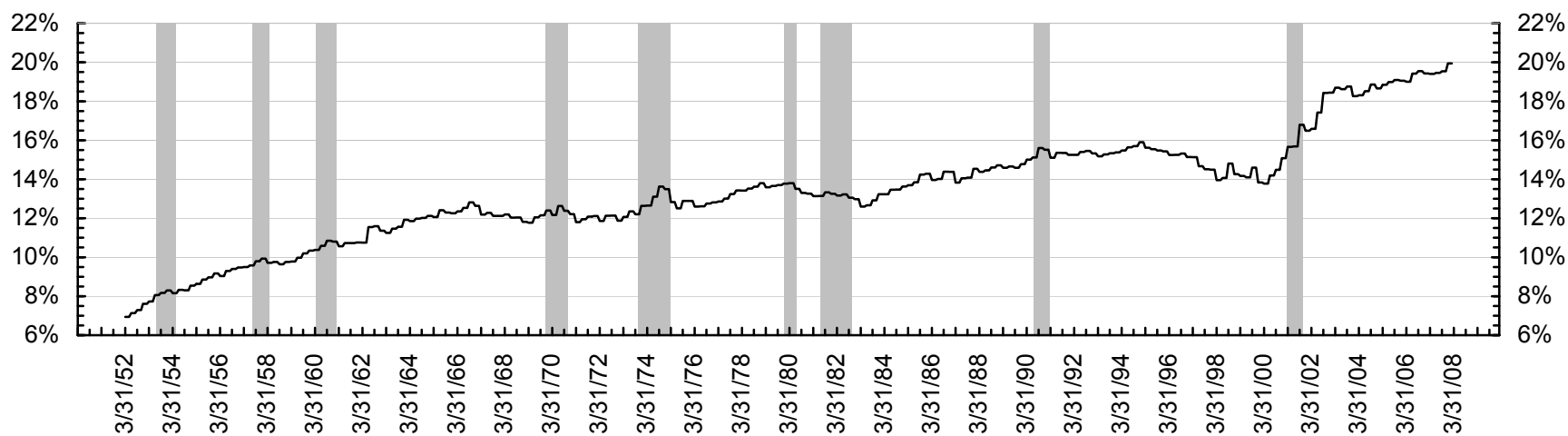
### Assets of Commercial Banks in the United States Commercial & Industrial Loans (SA)



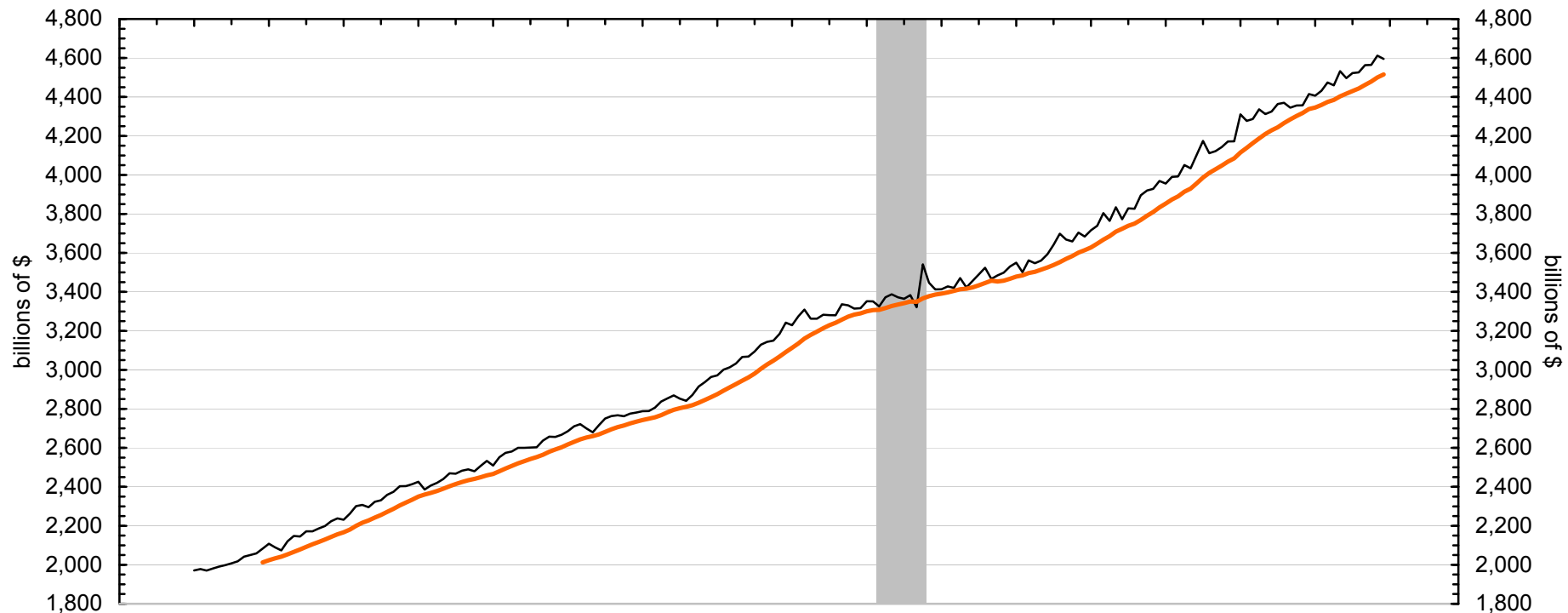
### Total Assets and Total Liabilities of Households and Nonprofit Organizations



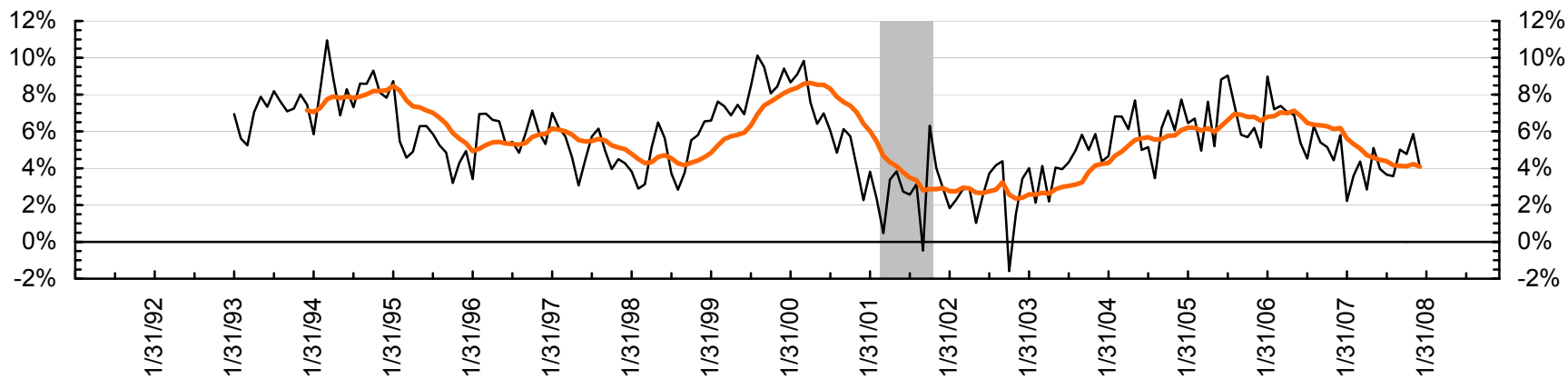
### Total Liabilities/Total Assets Ratio



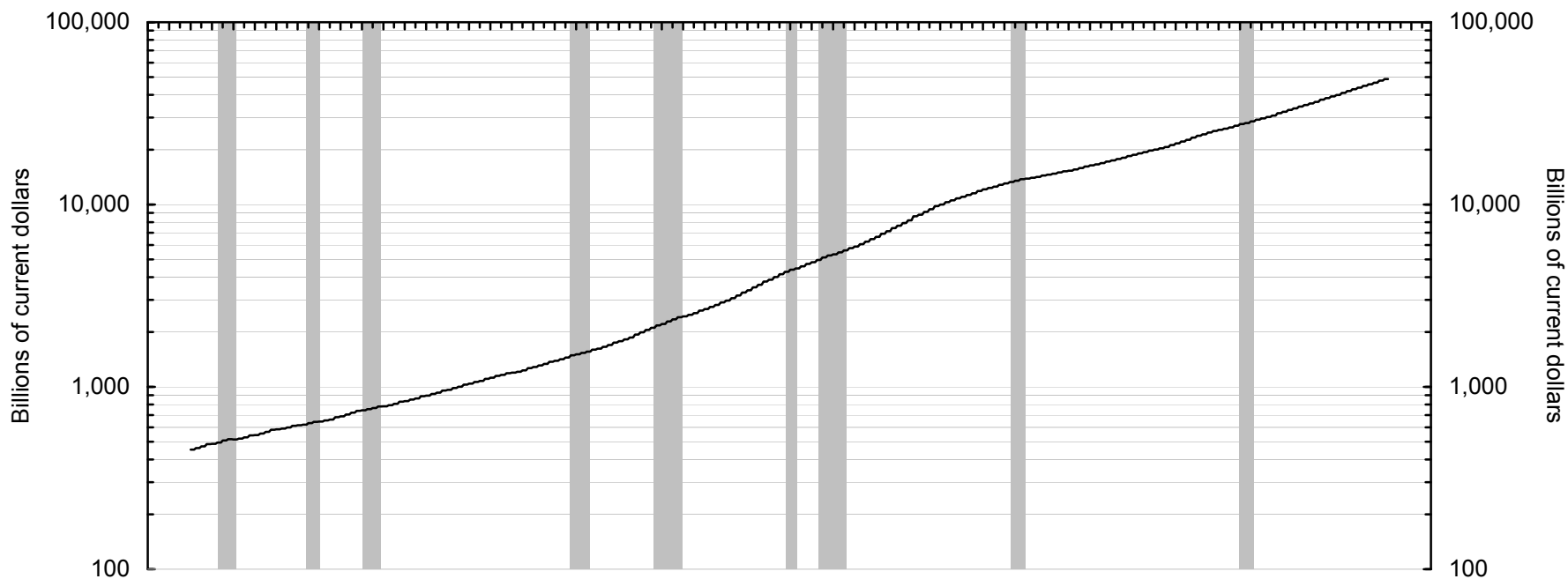
### Total Retail and Food Services Sales Annualized monthly and 12 months total - seasonally adjusted



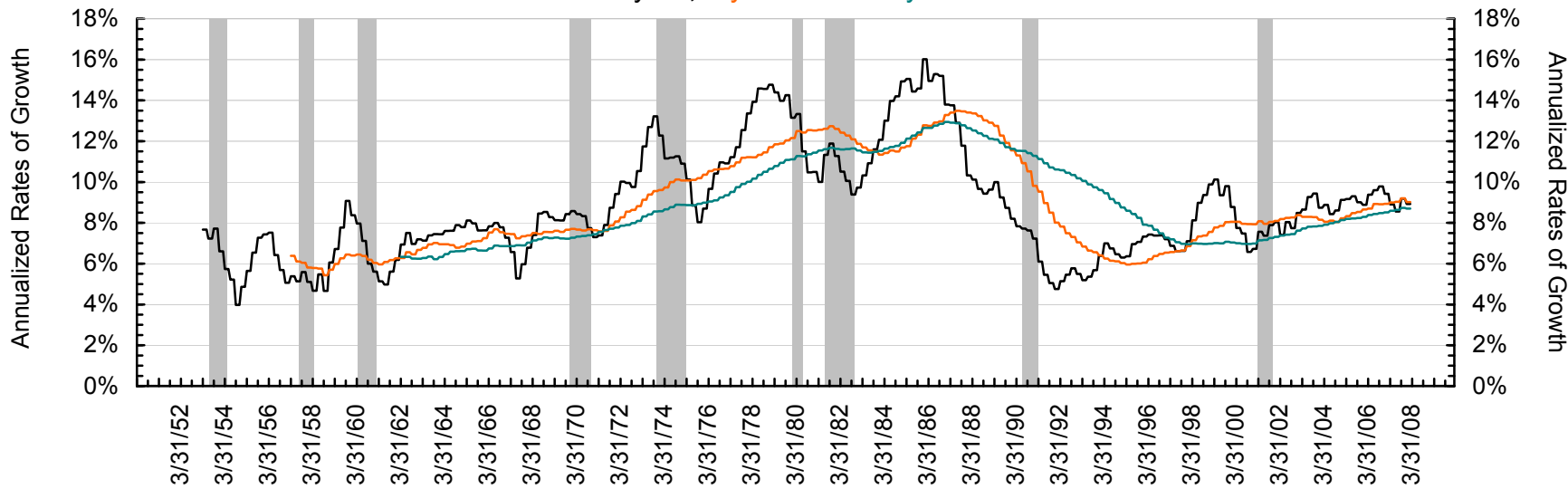
### Annual Rate of Change



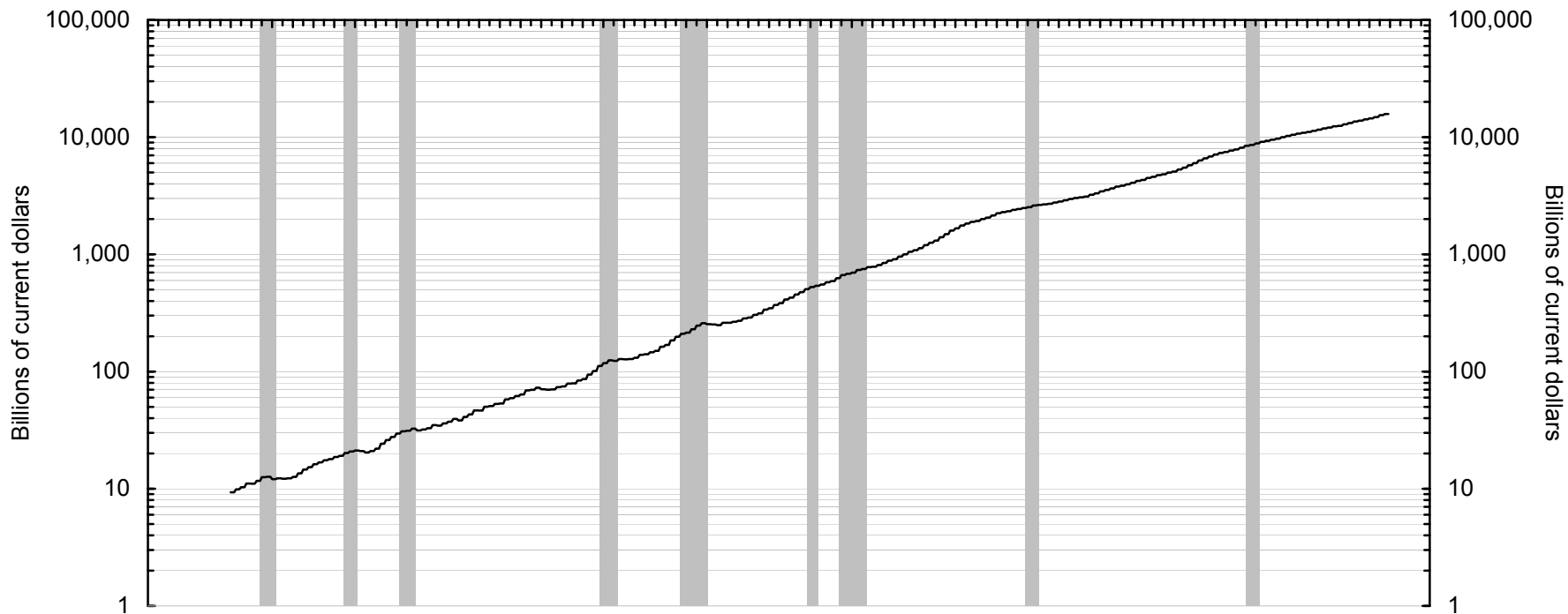
### Total Credit Market Debt Outstanding



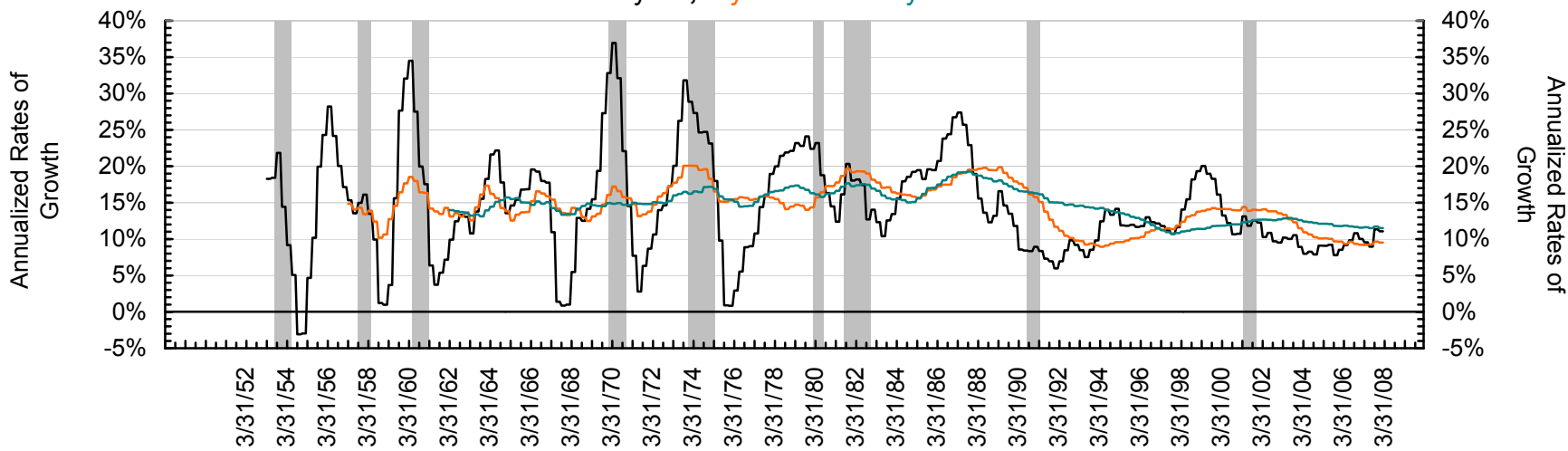
### 1 year, 5 years and 10 years



### Financial Debt Outstanding

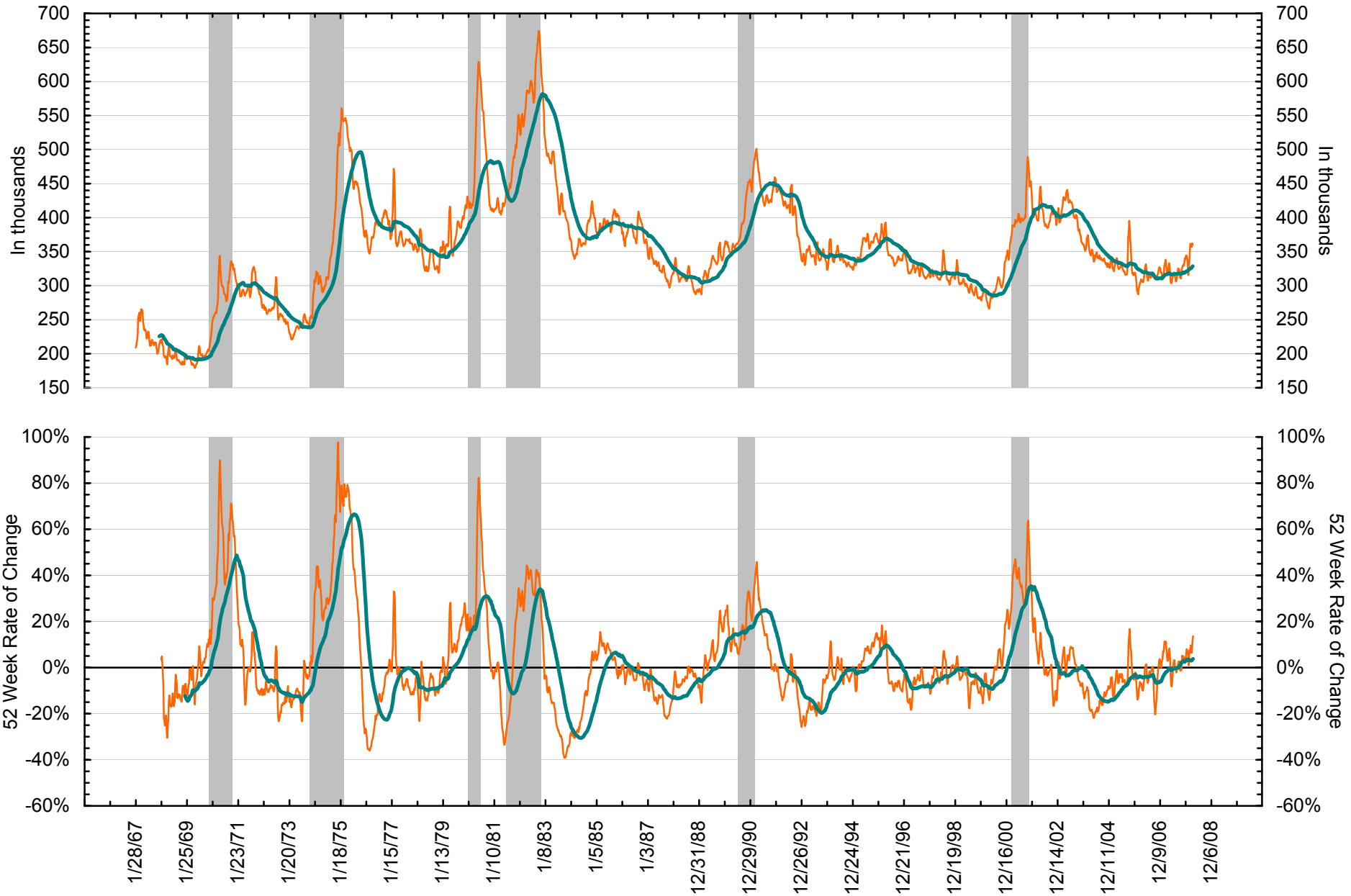


### 1 year, 5 years and 10 years



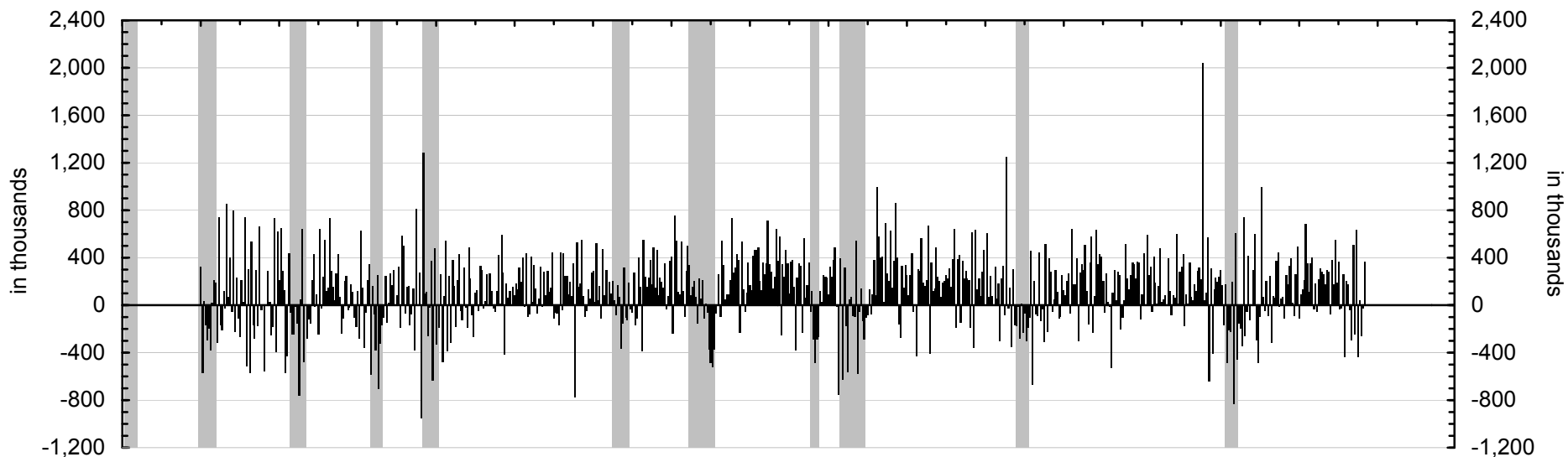
### Initial Unemployment Insurance Claims

4 week moving average of SA and 52 week moving average of NSA

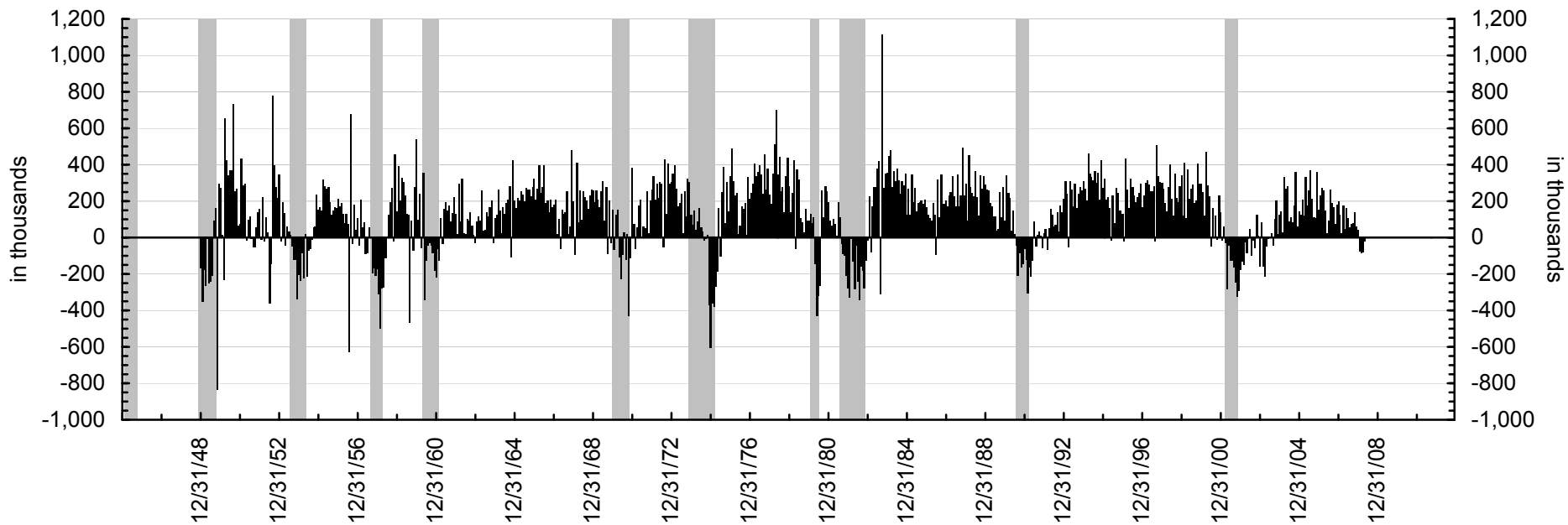




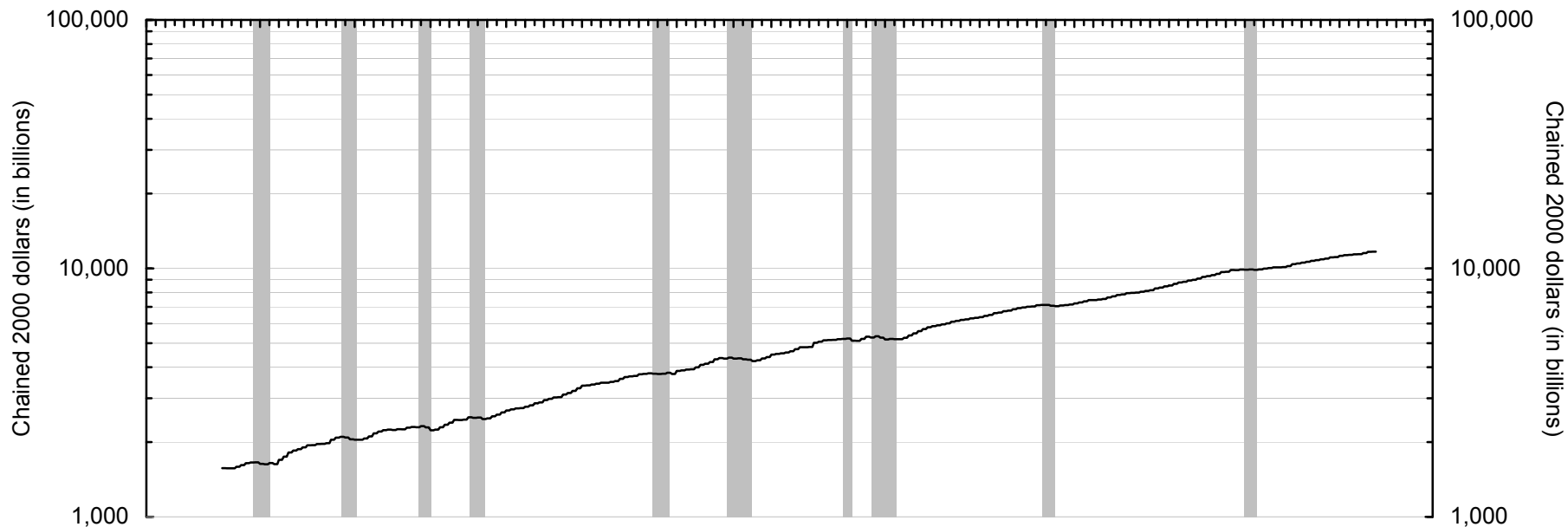
### Monthly Change in Employed Civilian Labor Force



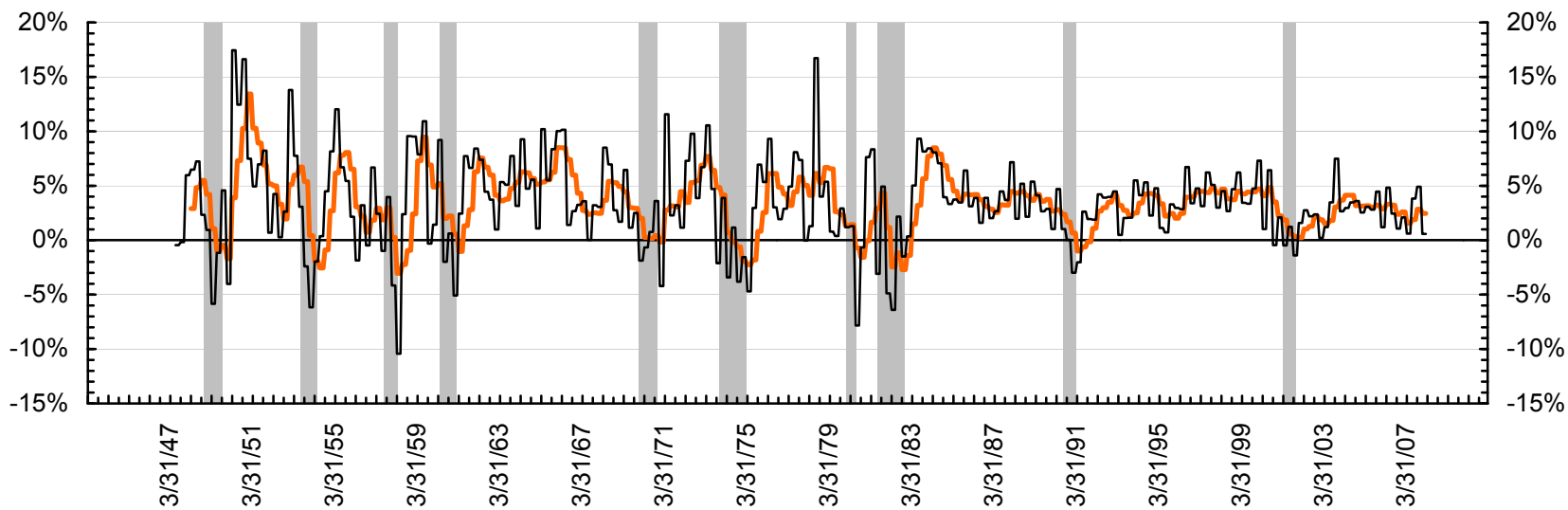
### Monthly Change in Total Nonfarm Payrolls



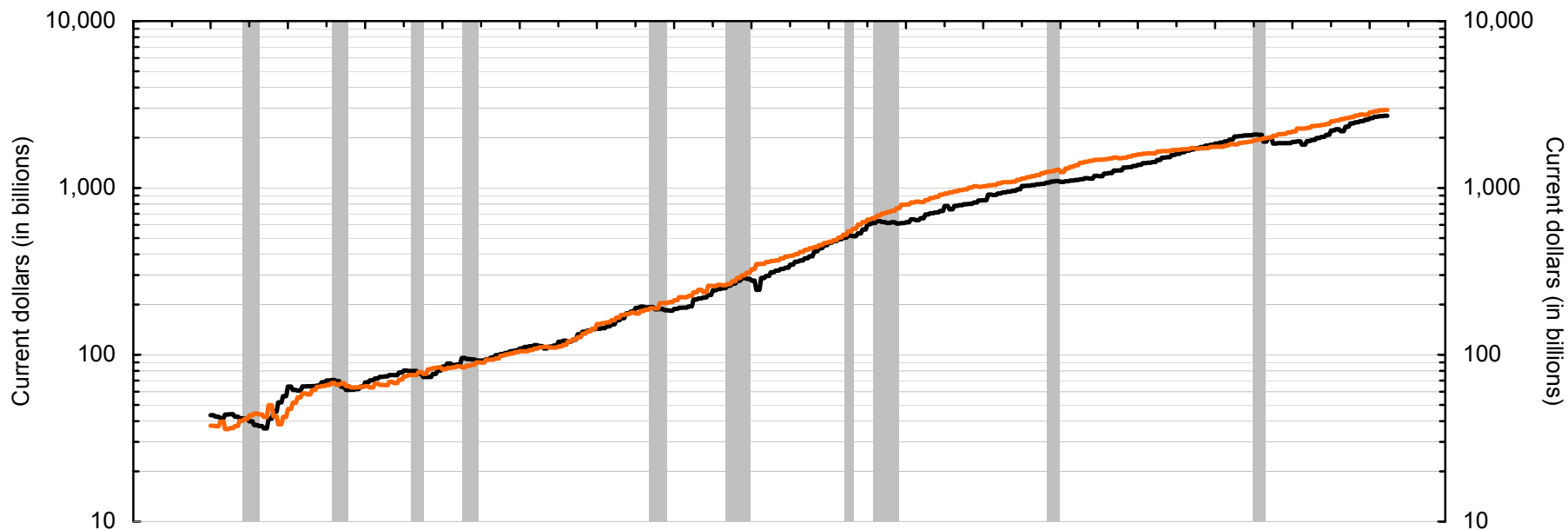
### Real Gross Domestic Product



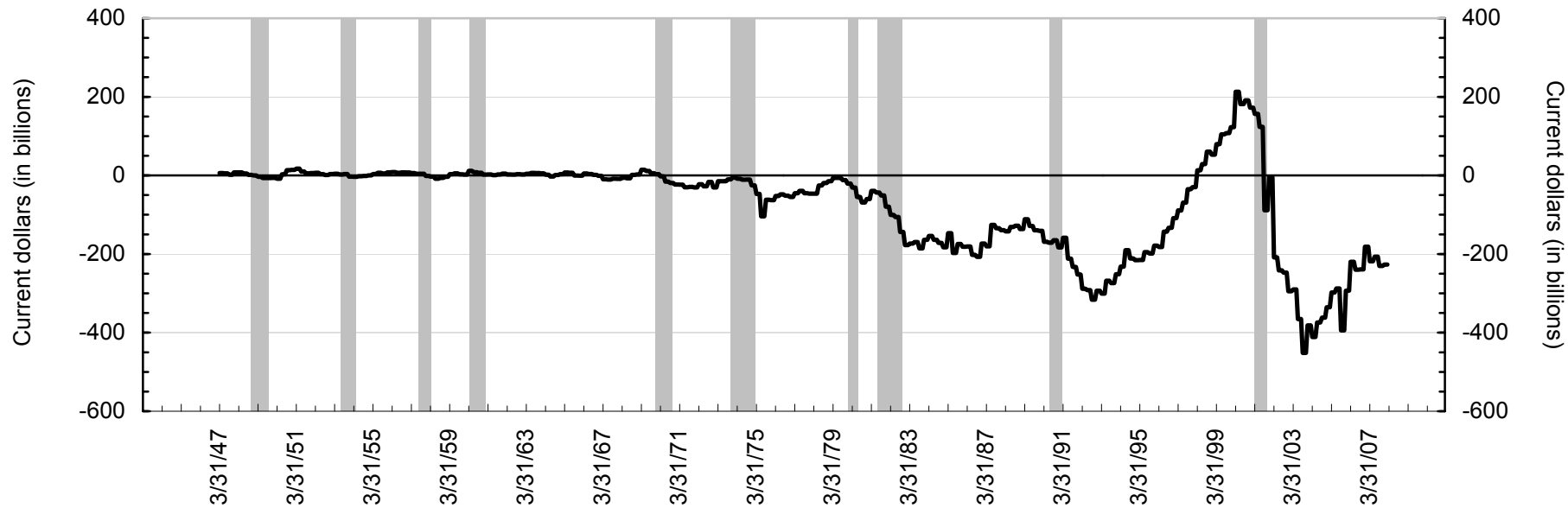
### Annualized Quarterly Rate of Change & Year over Year Rate of Change



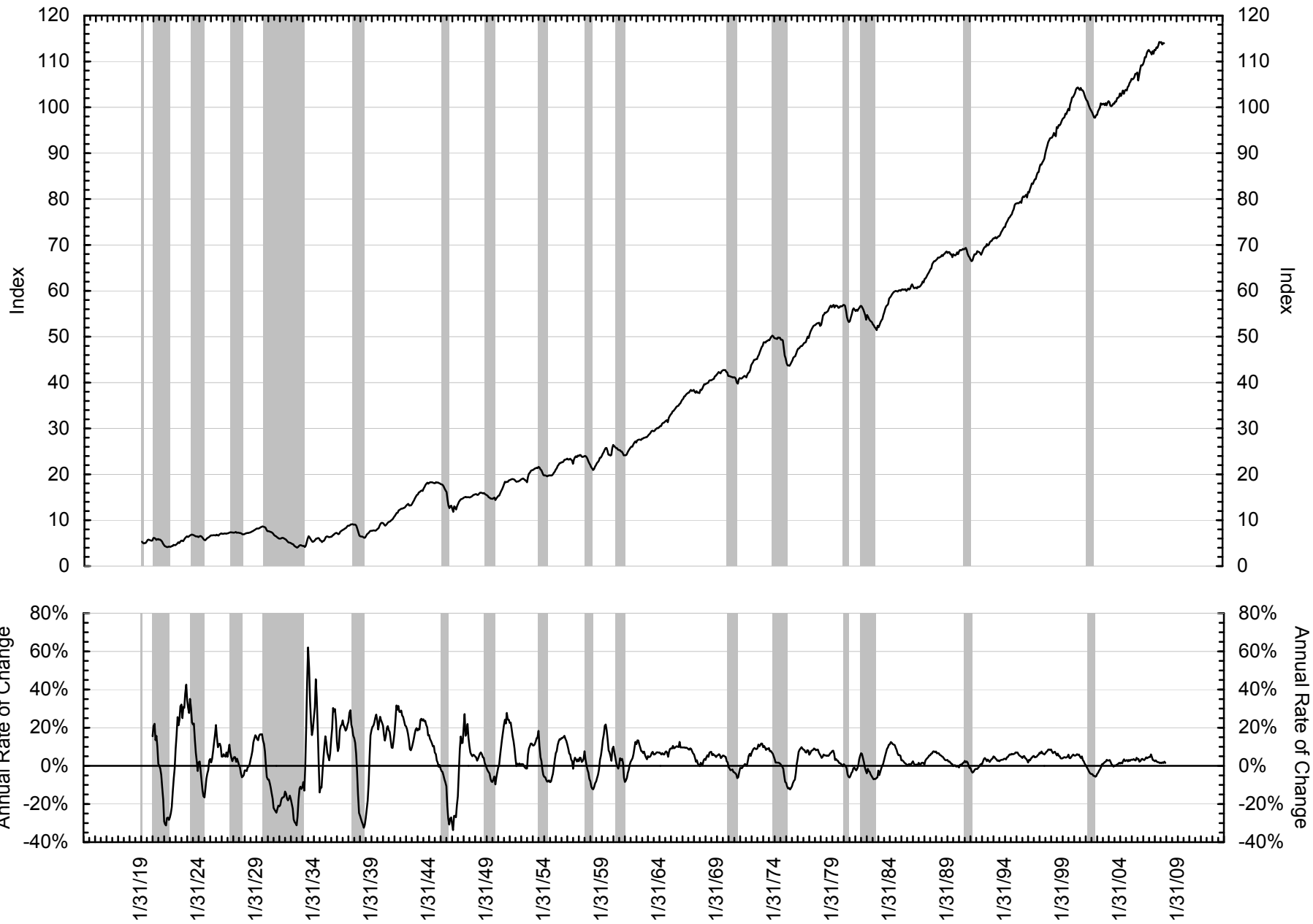
### Federal Government - Current Receipts & Expenditures



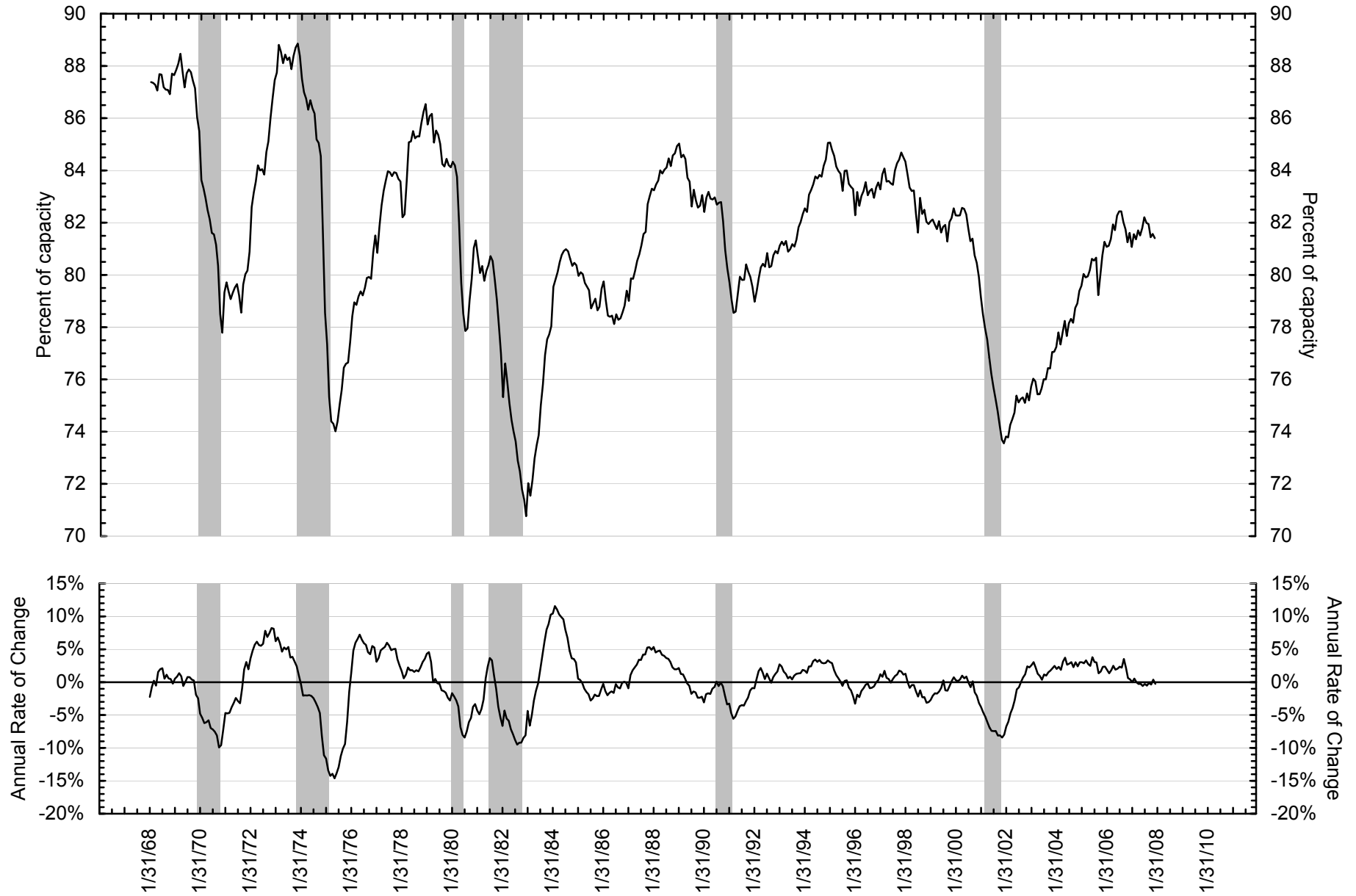
### Federal Government - Net Government Savings



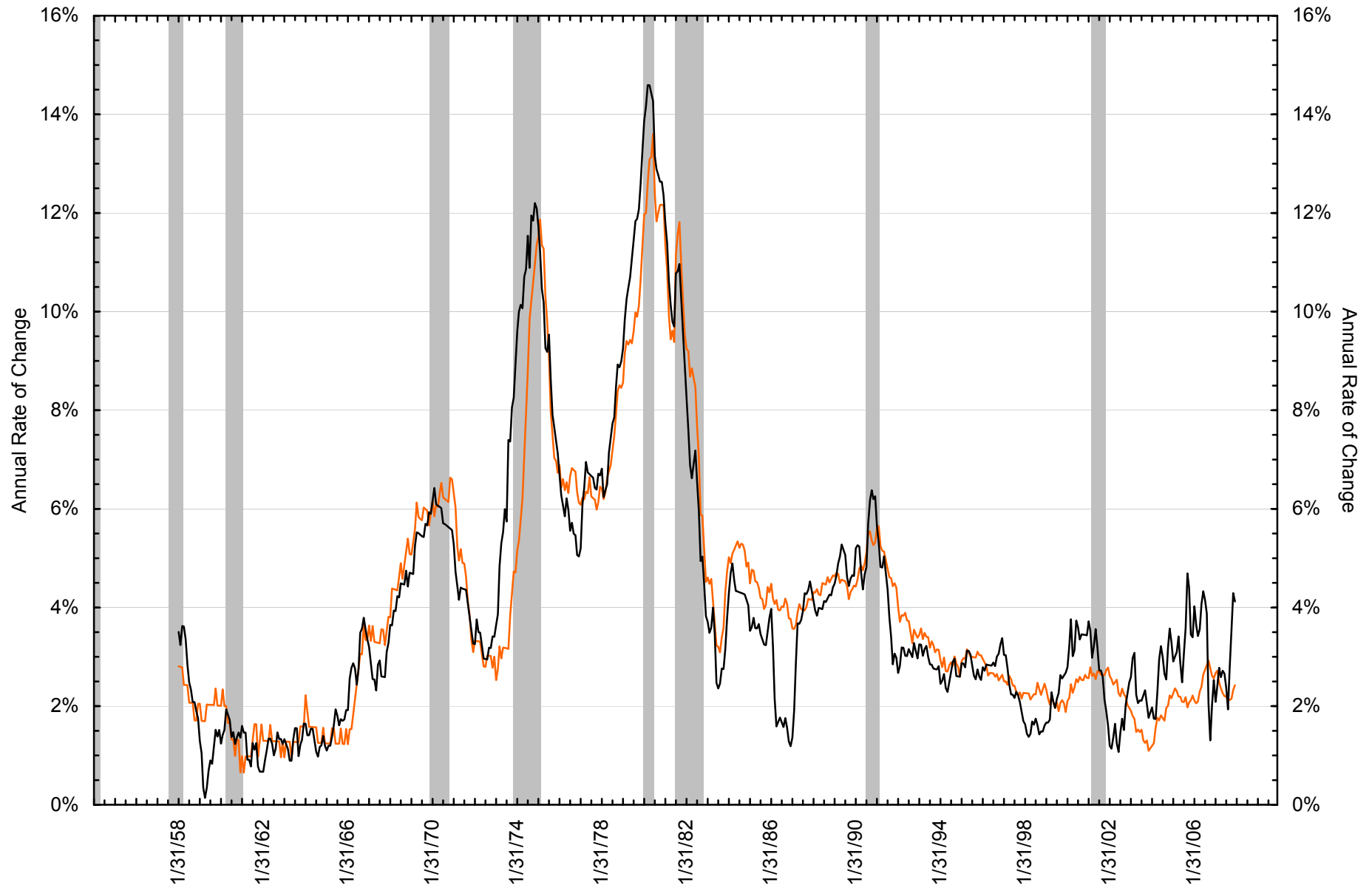
### Total Industrial Production



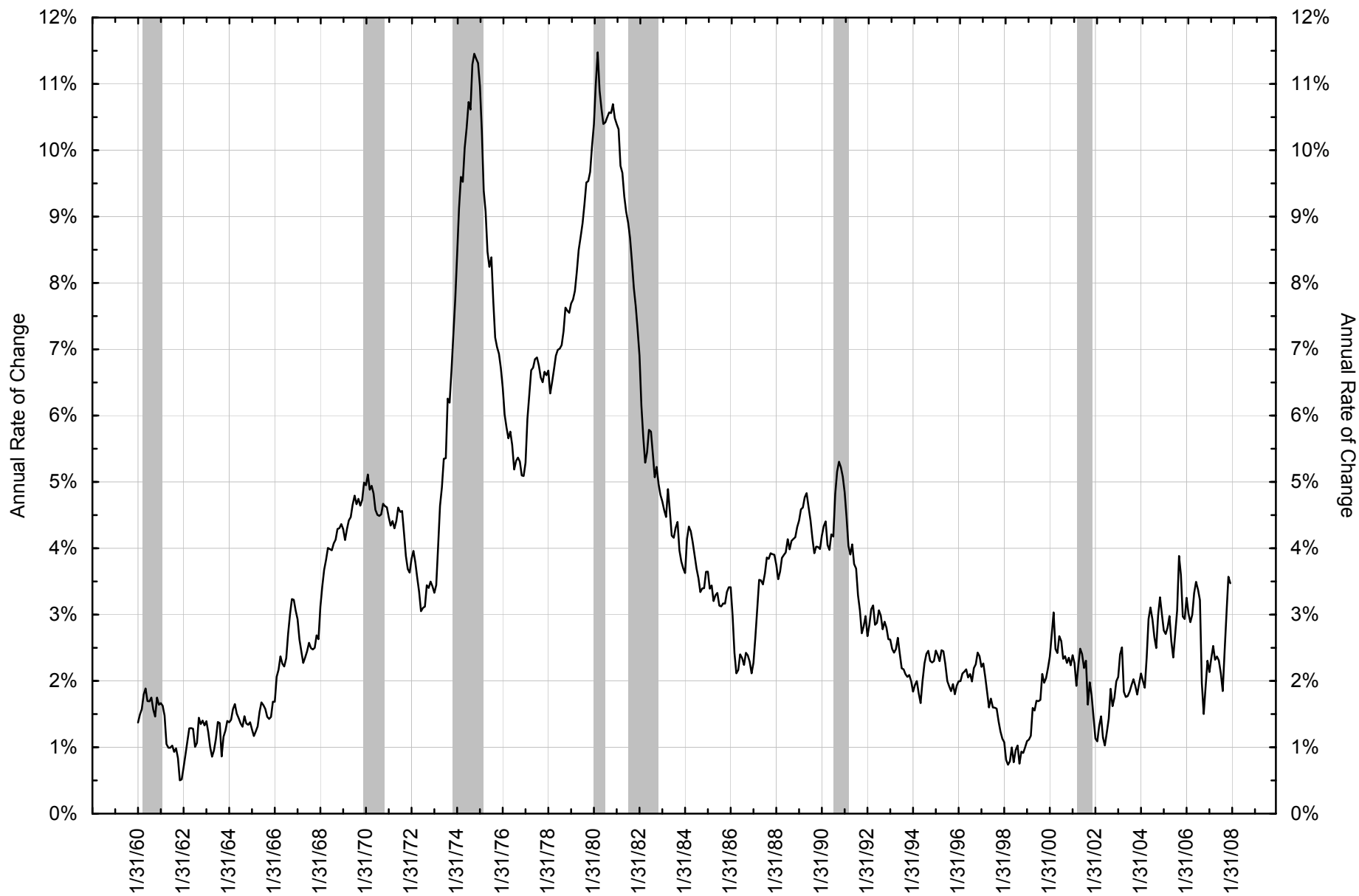
### Capacity Utilization Total Industry



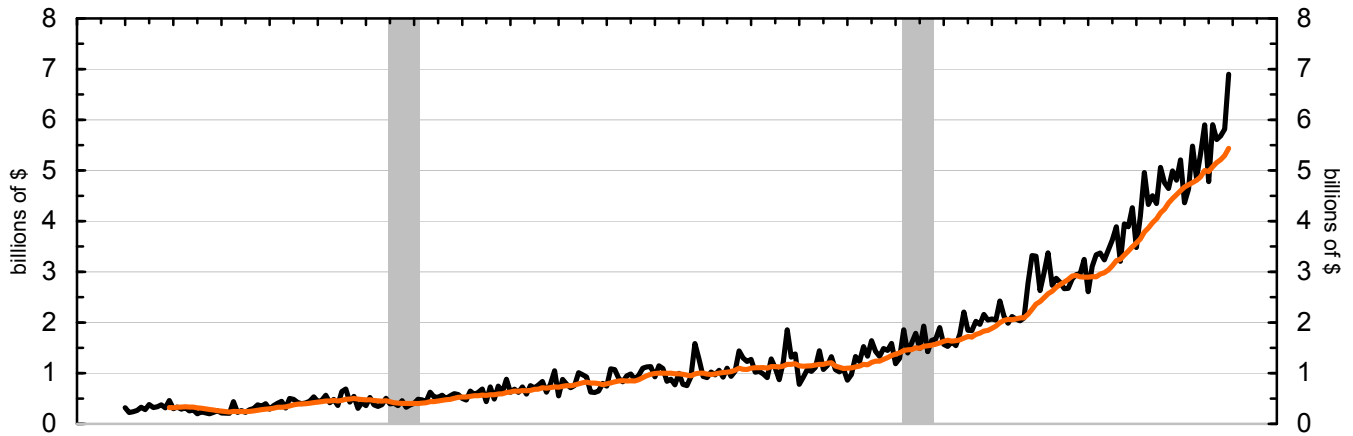
### Consumer Price Index All items (SA) and All items less food & energy (SA)



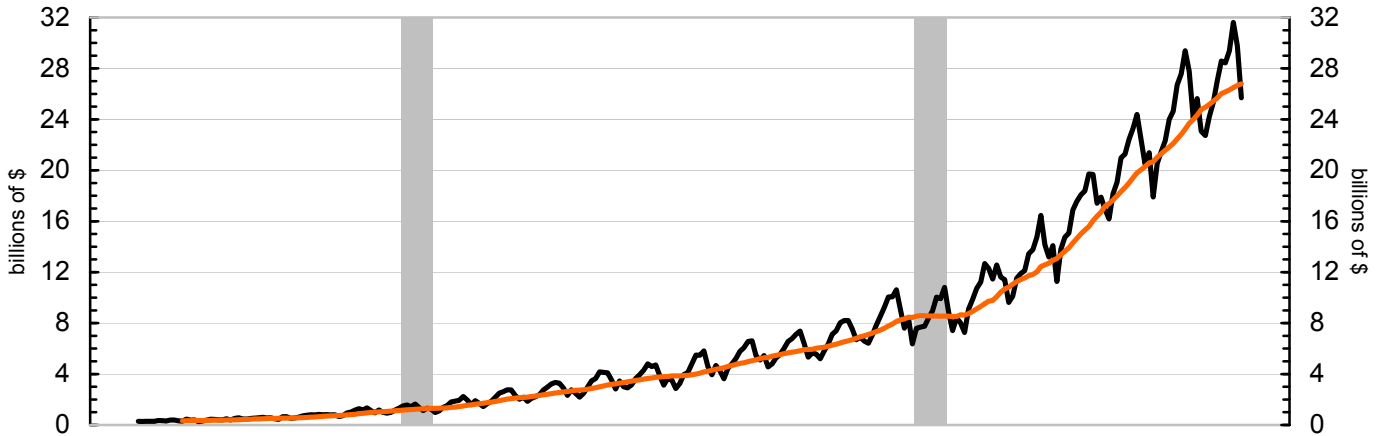
### Personal Consumption Expenditures Price Index All items (SA)



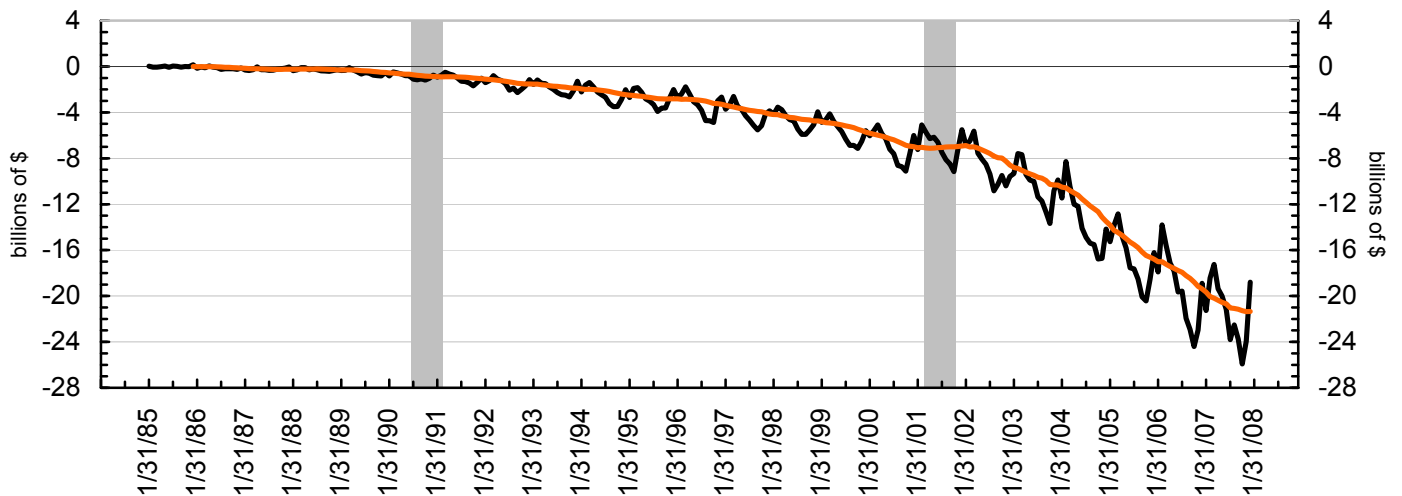
Exports of Goods to China  
Monthly and 12 months Moving Average - Census Basis NSA



Imports of Goods from China  
Monthly and 12 months Moving Average - Census Basis NSA

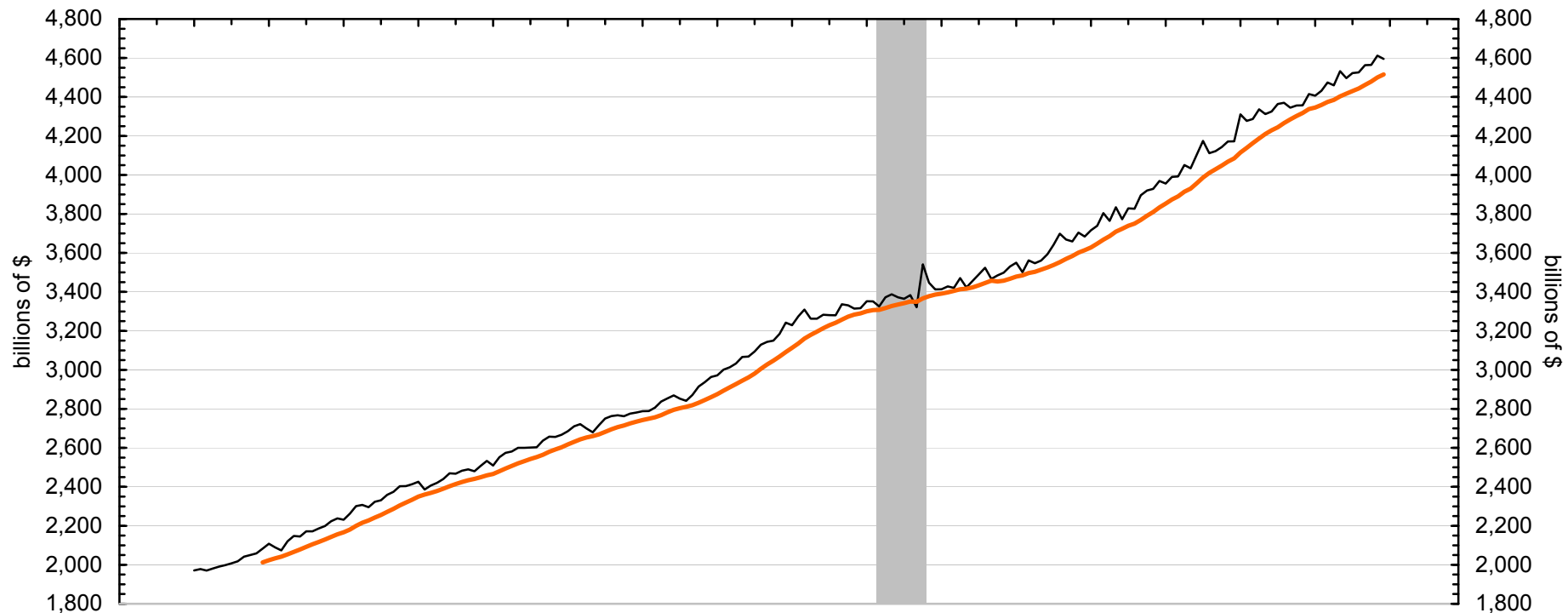


Trade Balance in Goods with China  
Monthly and 12 months Moving Average - Census Basis NSA

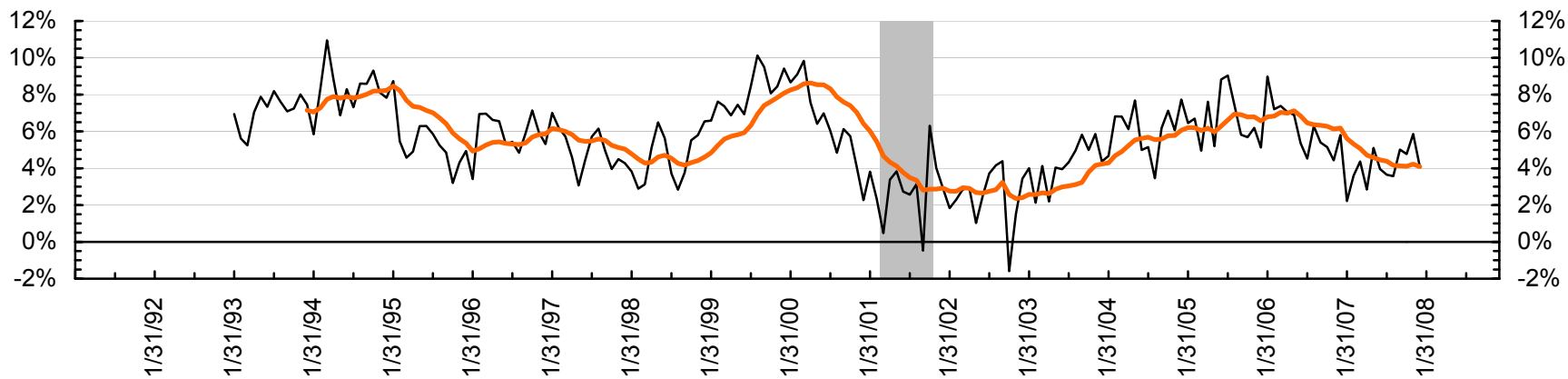




### Total Retail and Food Services Sales Annualized monthly and 12 months total - seasonally adjusted



### Annual Rate of Change



***Disclaimers and Limitations of Liability.*** The services and information provided by Thechartstore.com are provided “as is”, without warranty of any kind to subscriber or any third party, including, but not limited to, any express or implied warranties of merchantability or fitness for particular purpose, accuracy of informational content, and non-infringement.

Thechartstore.com shall not be liable to subscriber or any third party for any loss of profits, loss of use, interruption of business, or any direct, indirect, incidental or consequential damages of any kind that may result from the use of this publication by subscriber or any third party, whether under this agreement or otherwise, even if Thechartstore.com was advised of the possibility of such damages or was grossly negligent.

Thechartstore.com has made all reasonable efforts to insure the accuracy of the data on which the graphics presented in this publication have been based, but cannot and does not guarantee the accuracy of such underlying data or statistics.

Thechartstore.com does not promote the use of the information contained herein for any specific purpose, and makes no representations or warranties that the information contained in this publication is suitable for the particular purposes of the subscriber or any other party. Thechartstore.com assumes no responsibility or liability of any kind for the use of the information contained herein by the subscriber or any other party.

Copyright © 2008 Thechartstore.com

Visit our website at:

<http://www.Thechartstore.com>