

8 Sample Business Cycle Charts from Thechartstore.com

Business Cycles

Business Cycle Peaks

1. Dow Jones Industrial Average - 12 months before and after since 1887
2. Moody's Aaa Bonds - 12 months before and after since 1920

Business Cycle Troughs

3. Dow Jones Industrial Average - 12 months before and after since 1888
4. Moody's Aaa Bonds - 12 months before and after since 1921

Business Cycles (trough to trough)

5. Dow Jones Industrial Average - Monthly from 1945
6. Dow Jones Industrial Average (Inflation Adjusted) - Monthly from 1945

Federal Reserve Eases

7. Dow Jones Industrial Average - 12 months before and after since 1921

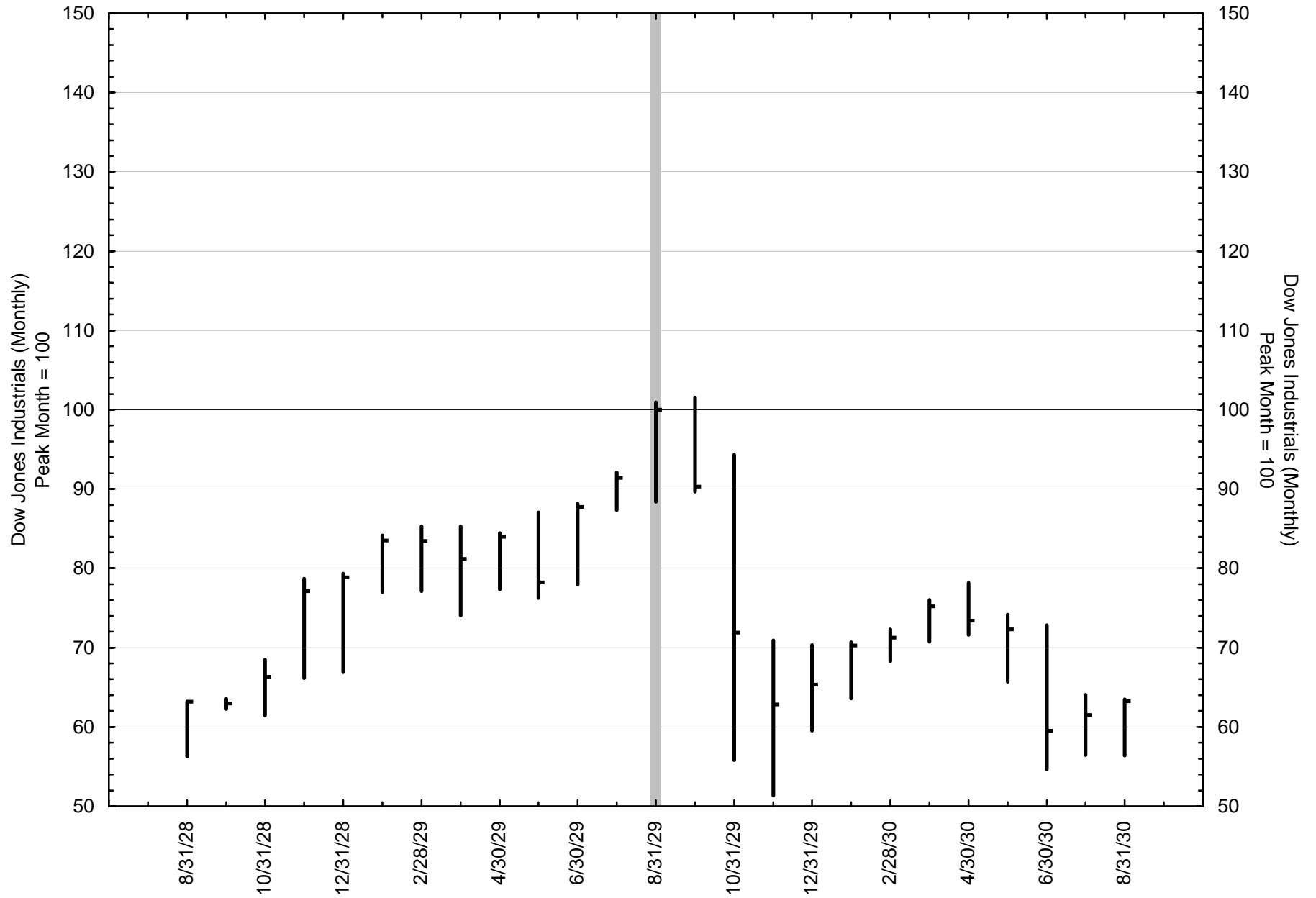
Federal Reserve Tightenings

8. Dow Jones Industrial Average - 12 months before and after since 1917

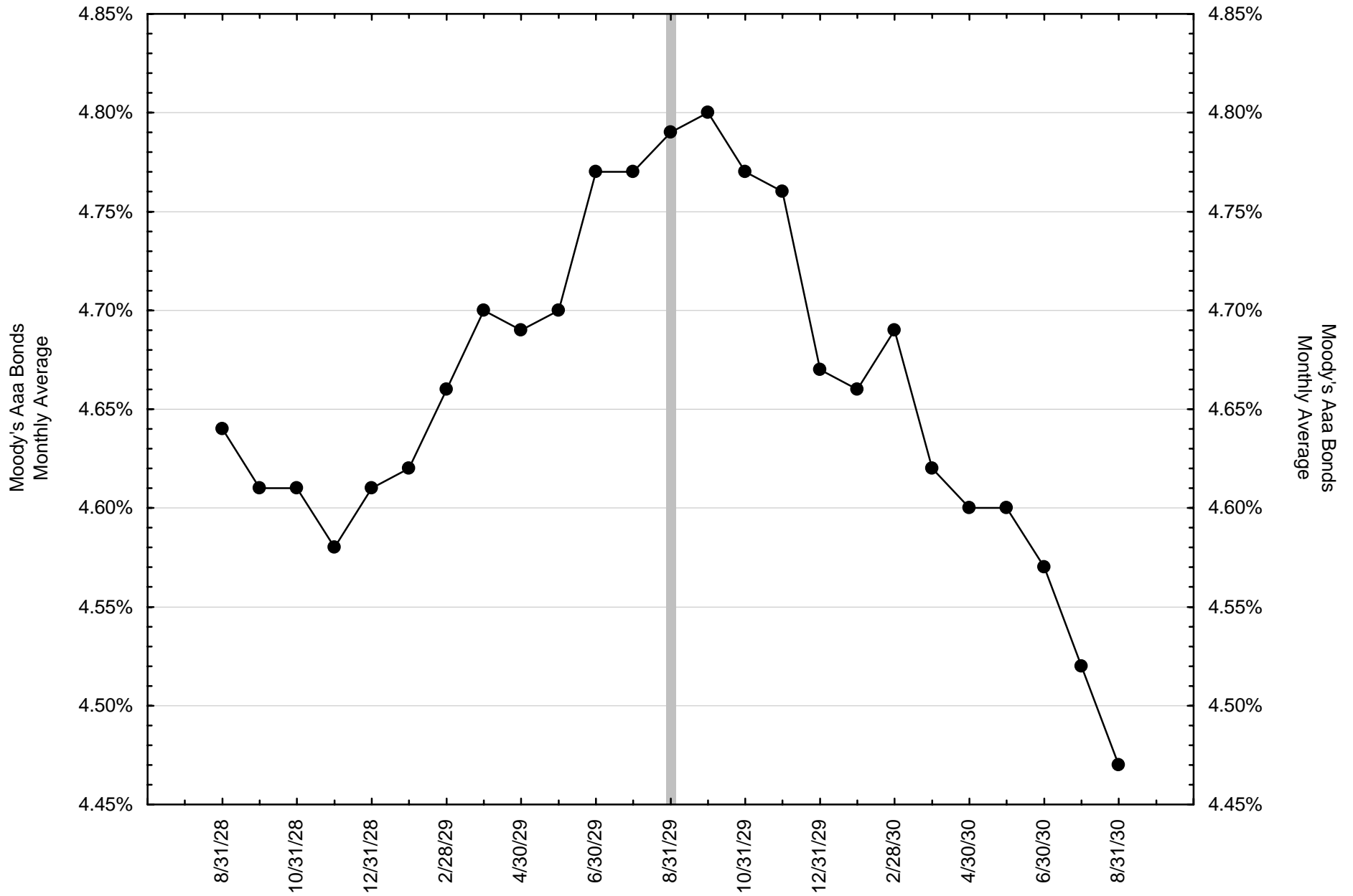
The information contained in this publication has been gathered from sources believed to be reliable, but Thechartstore.com makes no representations as to the accuracy or completeness of such information. This publication is further subject to the terms of the disclaimer and limitations of liability contained on the last page of this report.

Copyright © 2004 by Thechartstore.com

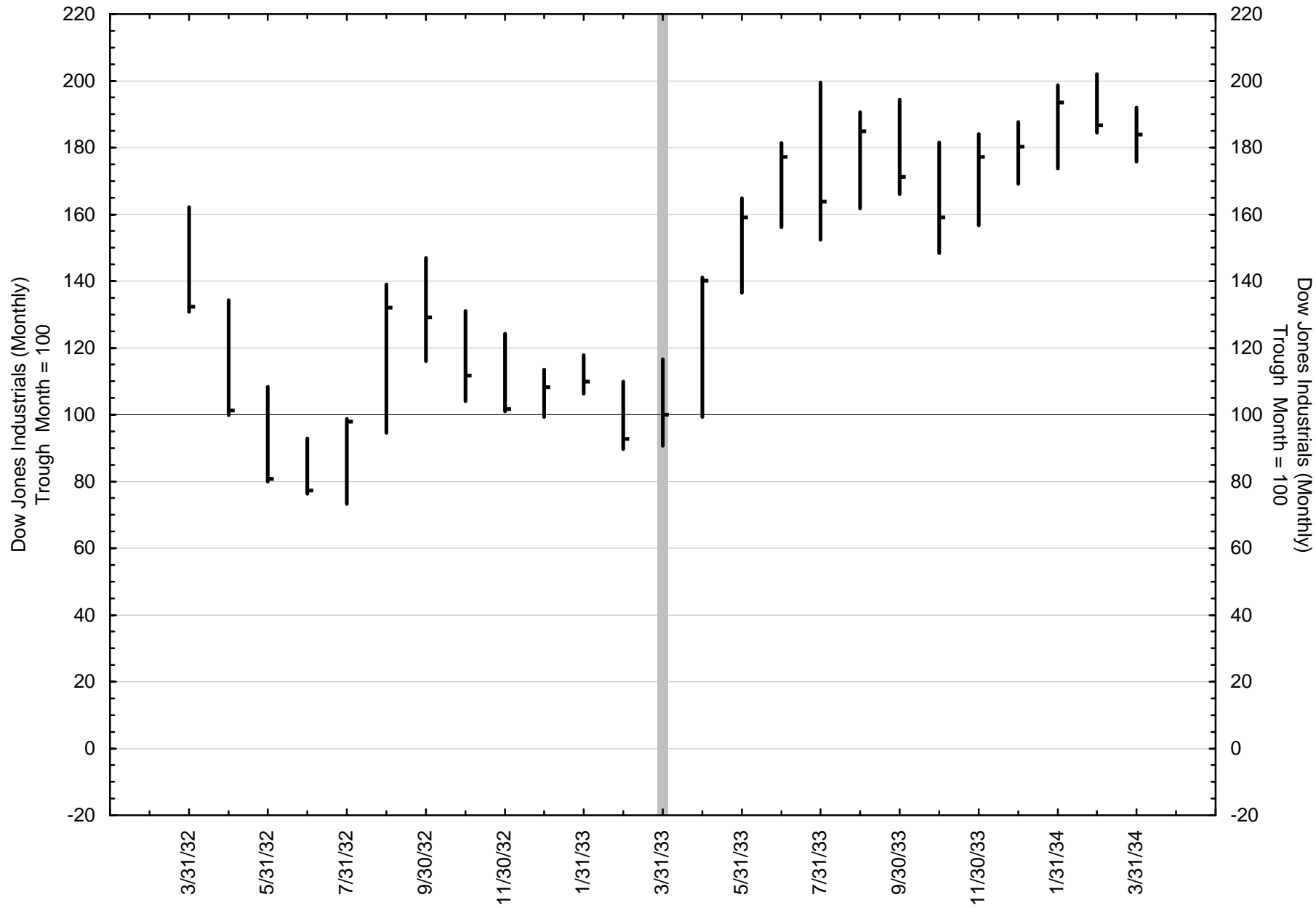
August 1929 Business Cycle Peak



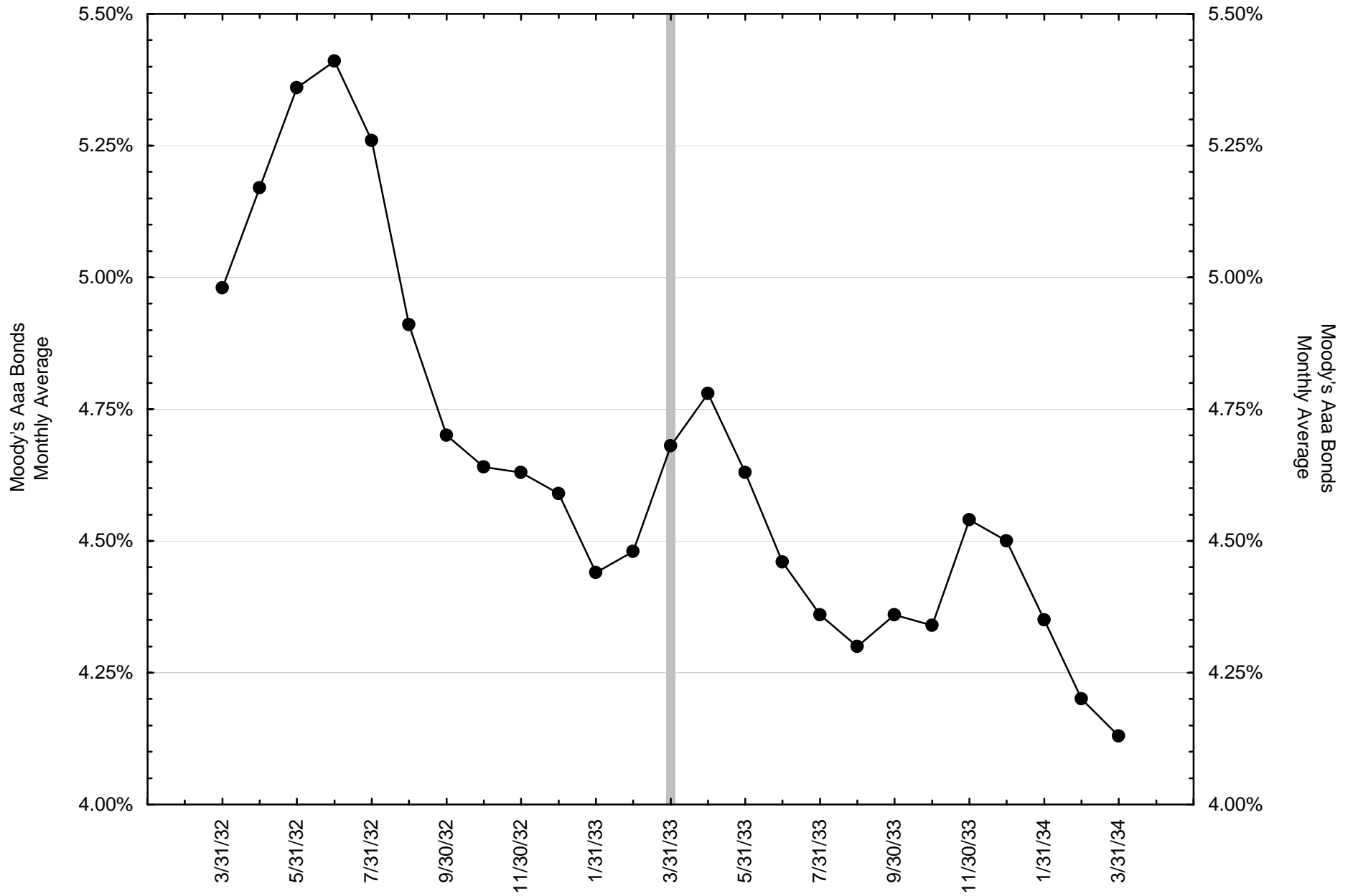
August 1929 Business Cycle Peak



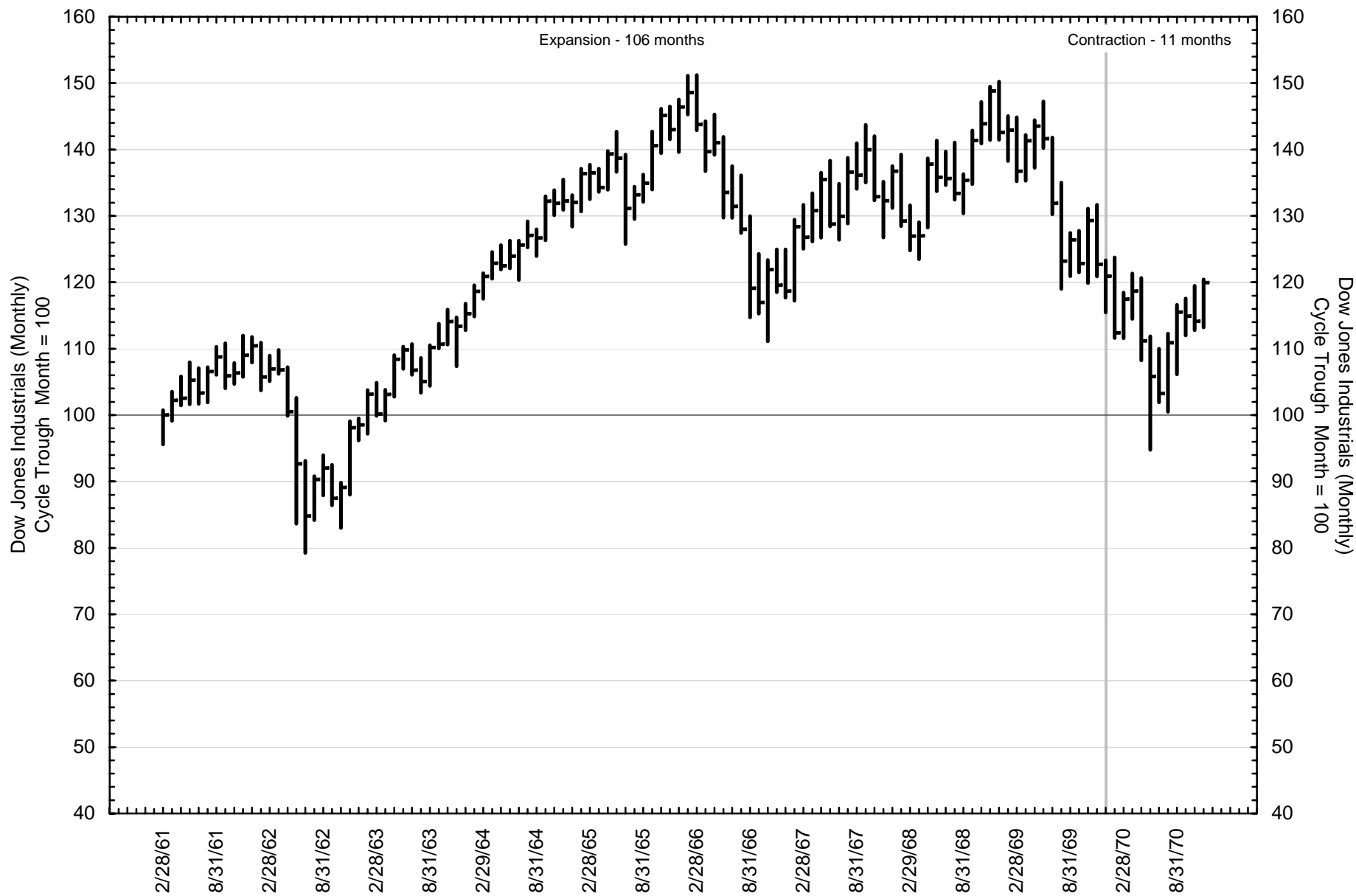
March 1933 Business Cycle Trough



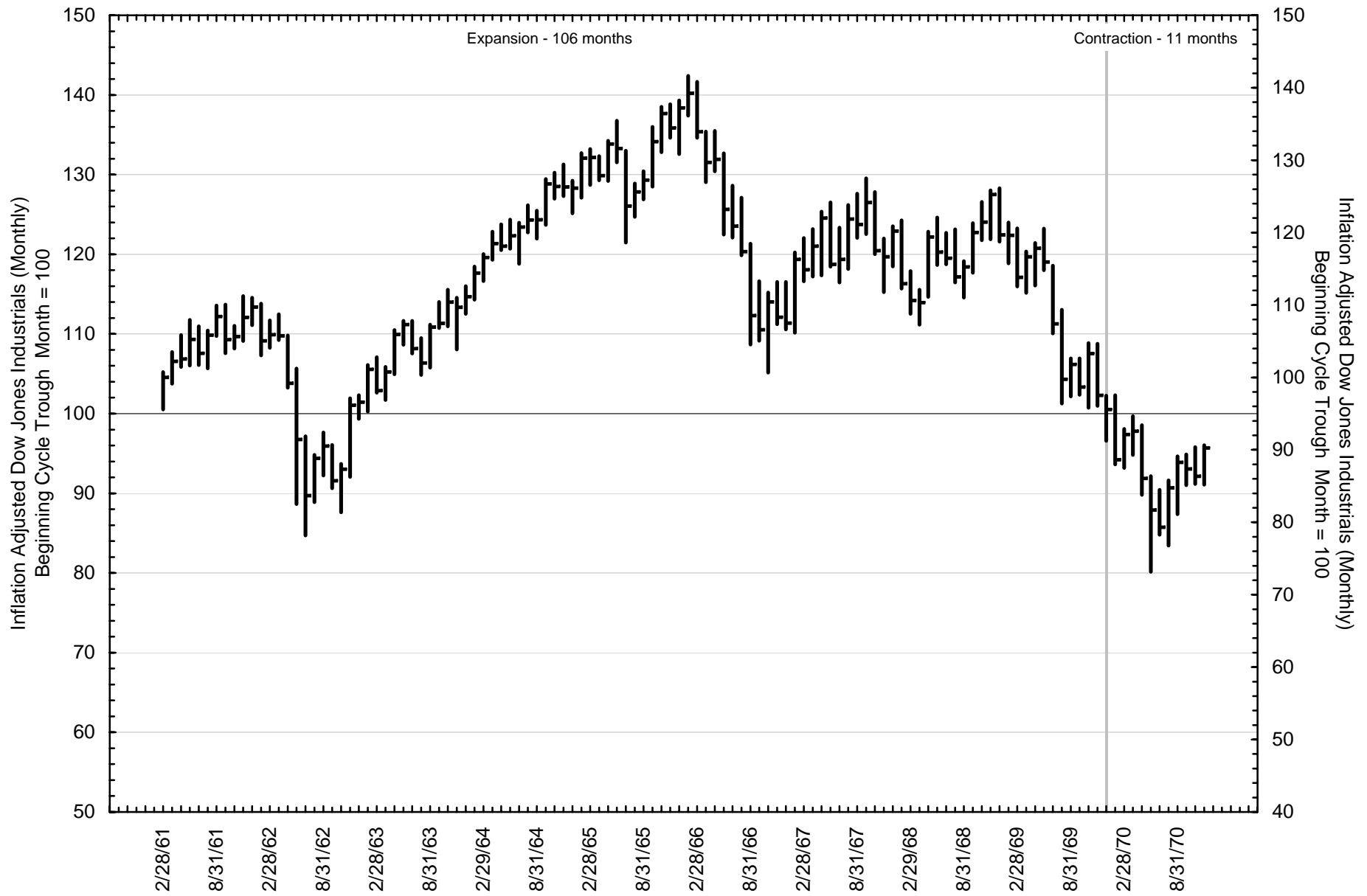
March 1933 Business Cycle Trough



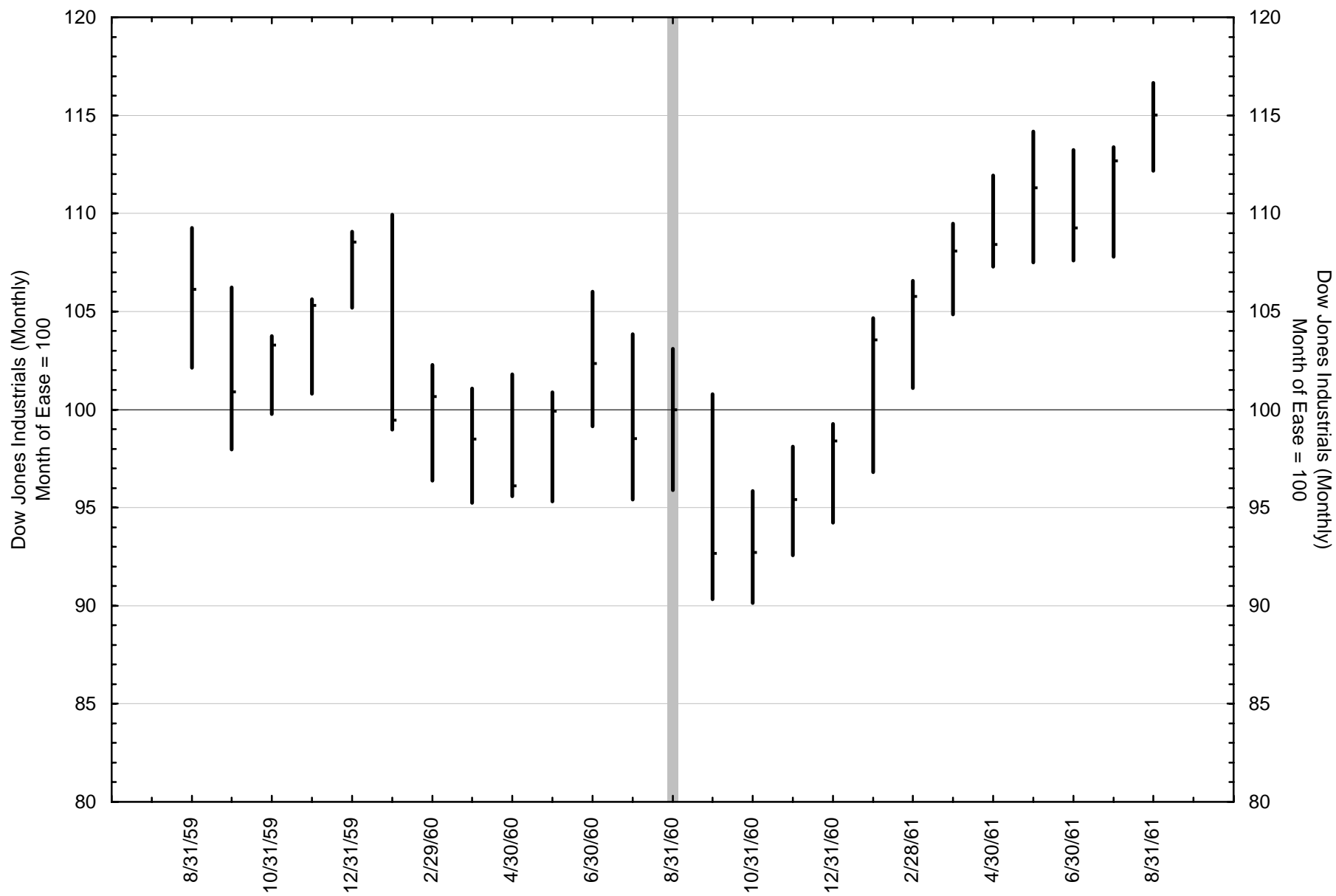
Business Cycle (trough to trough) and the Dow Jones Industrial Average February 1961 to November 1970



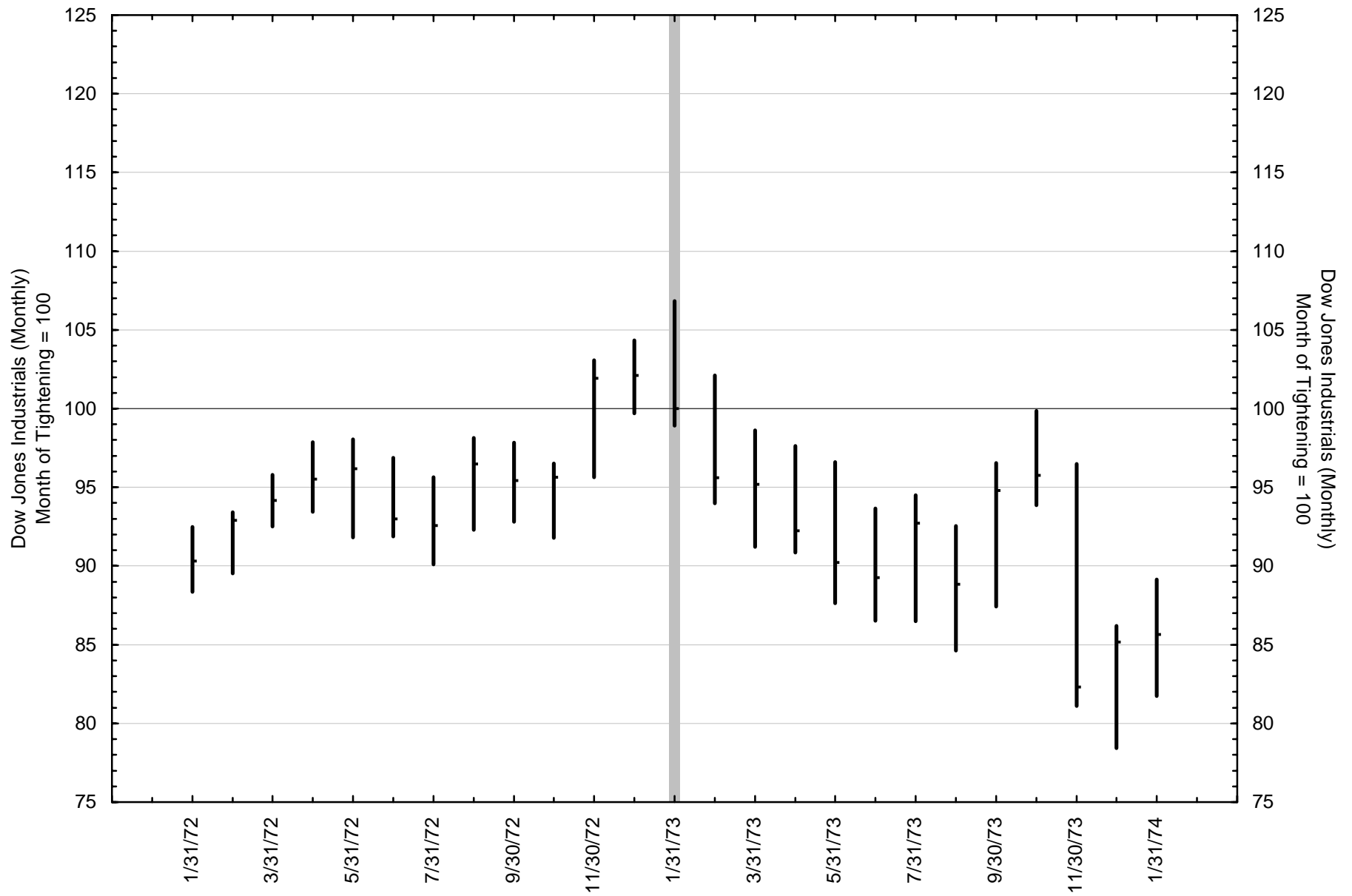
Business Cycle (trough to trough) and the Inflation Adjusted Dow Jones Industrial Average February 1961 to November 1970



Discount Rate - August 1960
(Change from prior year level crosses 0% going negative)



Discount Rate - January 1973
(Change from prior year level crosses 0% going positive)



Disclaimers and Limitations of Liability. The services and information provided by Thechartstore.com are provided “as is”, without warranty of any kind to subscriber or any third party, including, but not limited to, any express or implied warranties of merchantability or fitness for particular purpose, accuracy of informational content, and non-infringement.

Thechartstore.com shall not be liable to subscriber or any third party for any loss of profits, loss of use, interruption of business, or any direct, indirect, incidental or consequential damages of any kind that may result from the use of this publication by subscriber or any third party, whether under this agreement or otherwise, even if Thechartstore.com was advised of the possibility of such damages or was grossly negligent.

Thechartstore.com has made all reasonable efforts to insure the accuracy of the data on which the graphics presented in this publication have been based, but cannot and does not guarantee the accuracy of such underlying data or statistics.

Thechartstore.com does not promote the use of the information contained herein for any specific purpose, and makes no representations or warranties that the information contained in this publication is suitable for the particular purposes of the subscriber or any other party. Thechartstore.com assumes no responsibility or liability of any kind for the use of the information contained herein by the subscriber or any other party.

Copyright © 2004 Thechartstore.com

Visit our website at:
<http://www.Thechartstore.com>