

Examples of Other Charts from Thechartstore.com

Other Charts

Analog Charts

1. Stock Indices' Comparisons

Decennial Pattern

2. Dow Jones Industrial Average 1886-2007

Gold Adjusted Charts

3. Stock Indices - Monthly from as early as 1871

Inflation Adjusted Charts

4. S&P 500 - Monthly from 1871
5. Industrial Metals - Monthly from as early as 1900

Margin Debt

6. Margin Debt on the New York Stock Exchange - Monthly from 1943

Presidential Cycles

7. 10 year U.S. Treasury constant maturity - Every four years since 1944
8. S&P 500 Total Return - Every four years since 1928

Relative Valuations

9. Relative Prices of S&P 500 GICS Sectors - Daily from 1990
10. Relative Prices of Major Stock Indices - Monthly 1981 to present
11. Relative Prices of Major Commodity Indices - Monthly 1991 to present

Seasonal Patterns

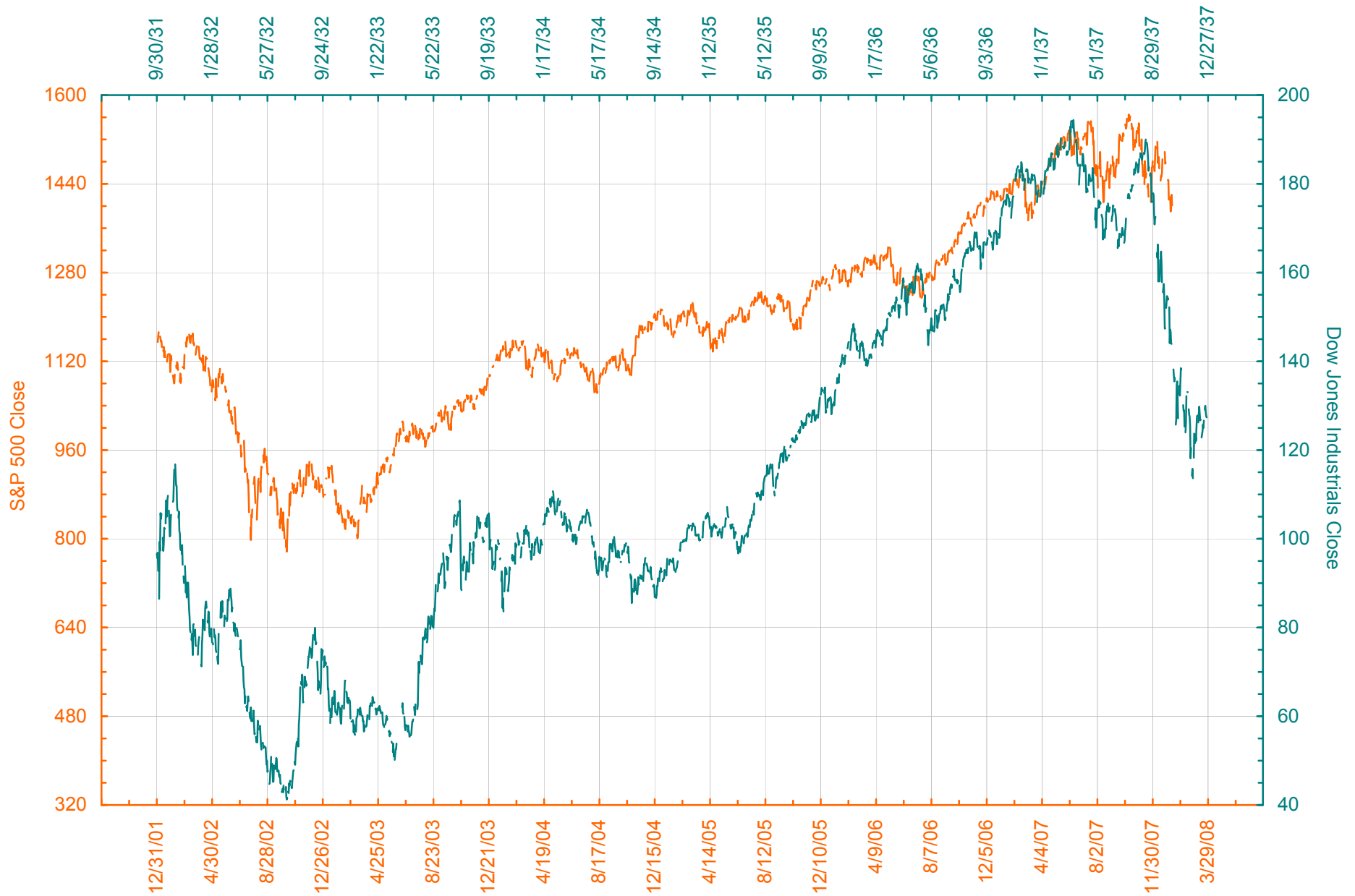
12. S&P 500 Total Return in Election Years

Stock Market Cycles

13. Bull and Bear Markets from 1914
14. Bull and Bear Markets from 1942

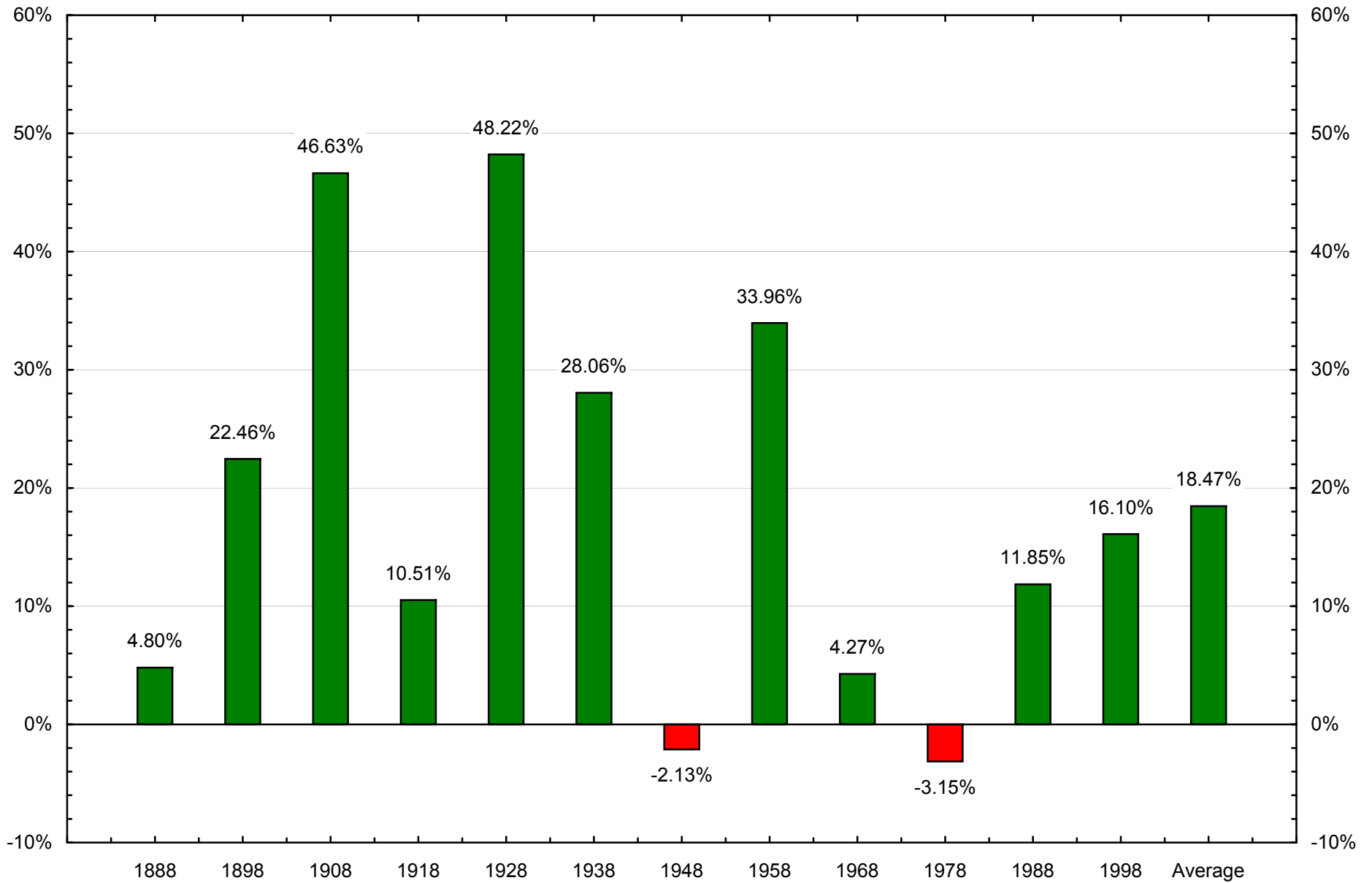
The information contained in this publication has been gathered from sources believed to be reliable, but Thechartstore.com makes no representations as to the accuracy or completeness of such information. This publication is further subject to the terms of the disclaimer and limitations of liability contained on the last page of this report.

S&P 500 vs. Dow Jones Industrials - Calendar Days

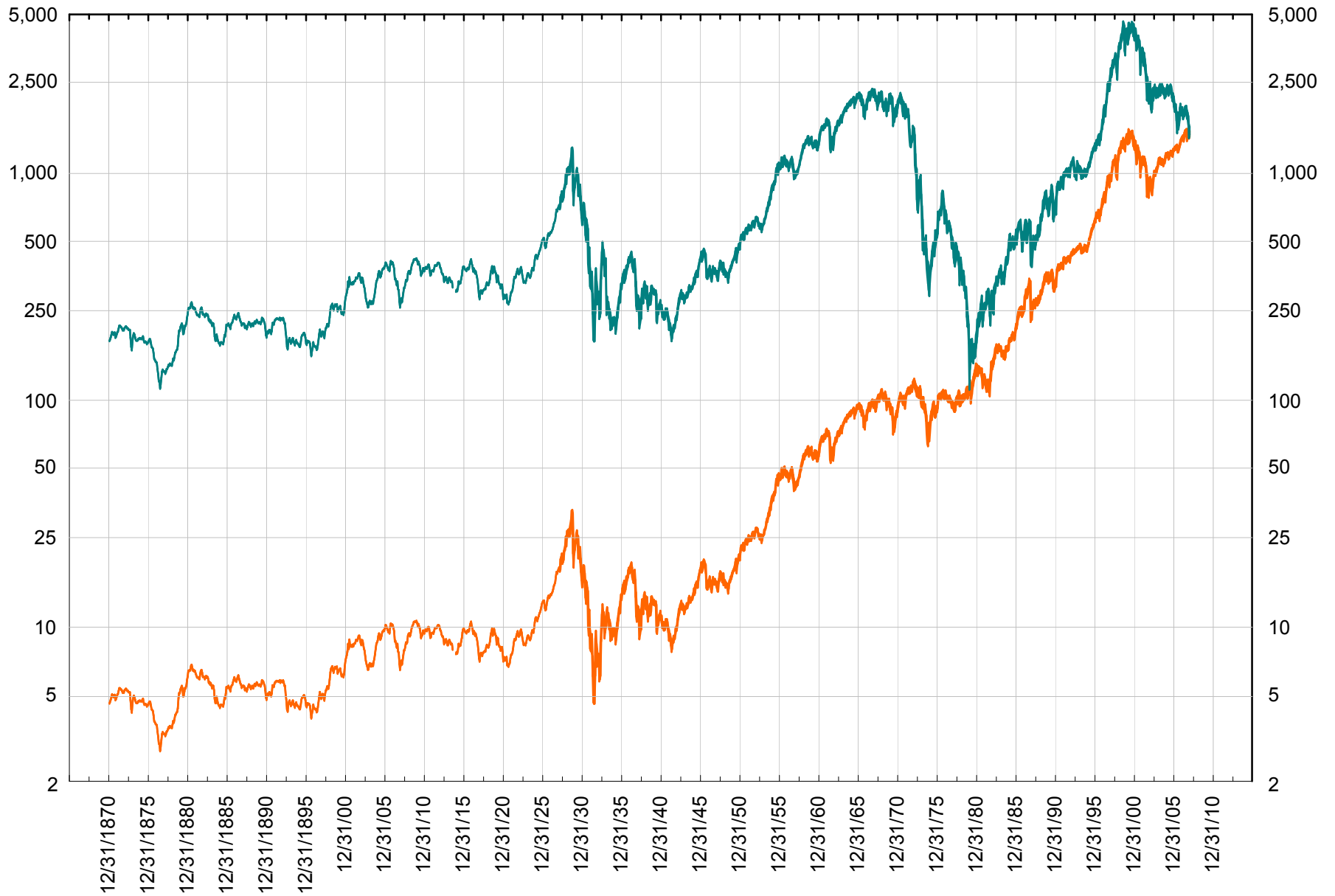


Dow Jones Industrial Average

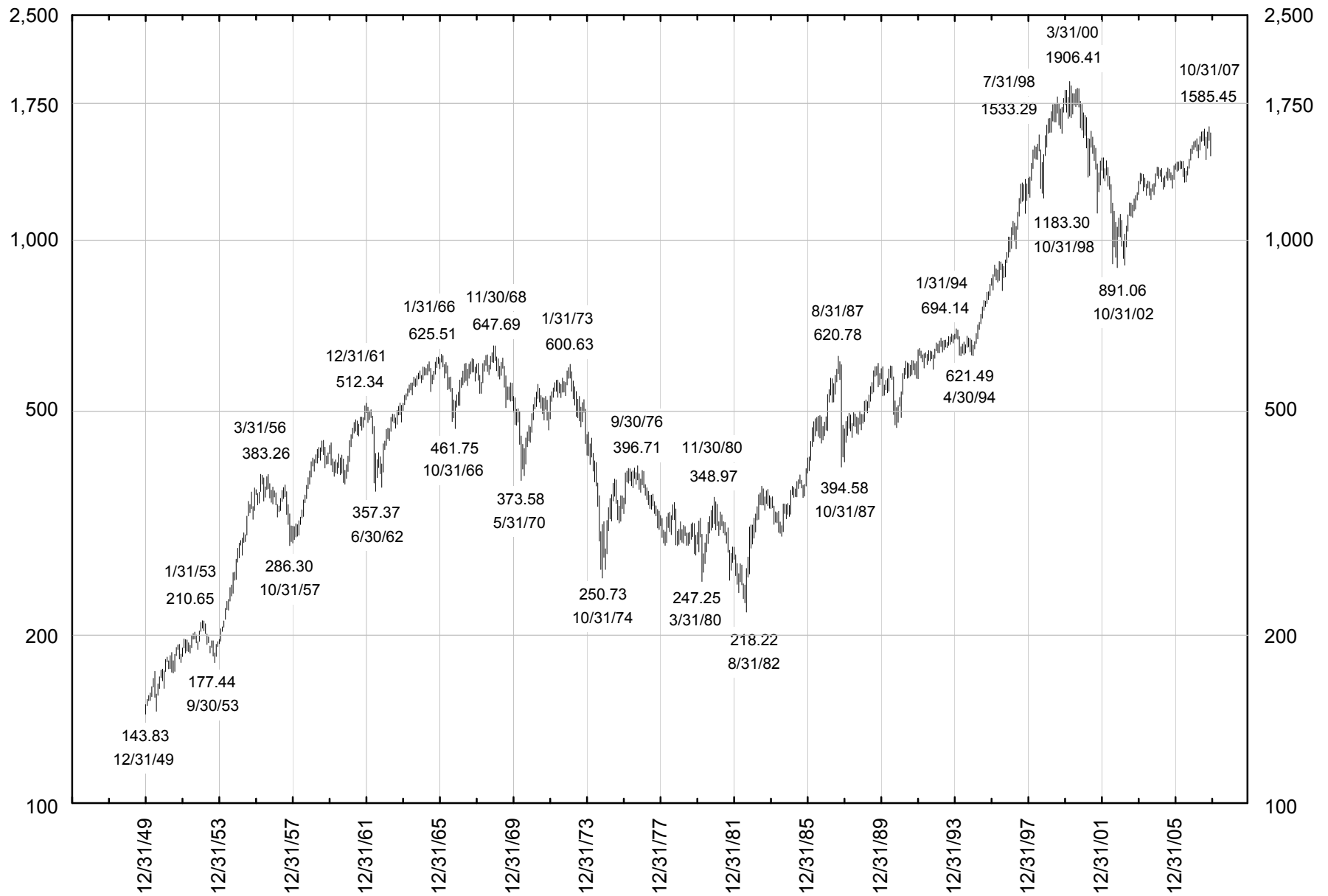
The Decennial Pattern - Years Ending in 8



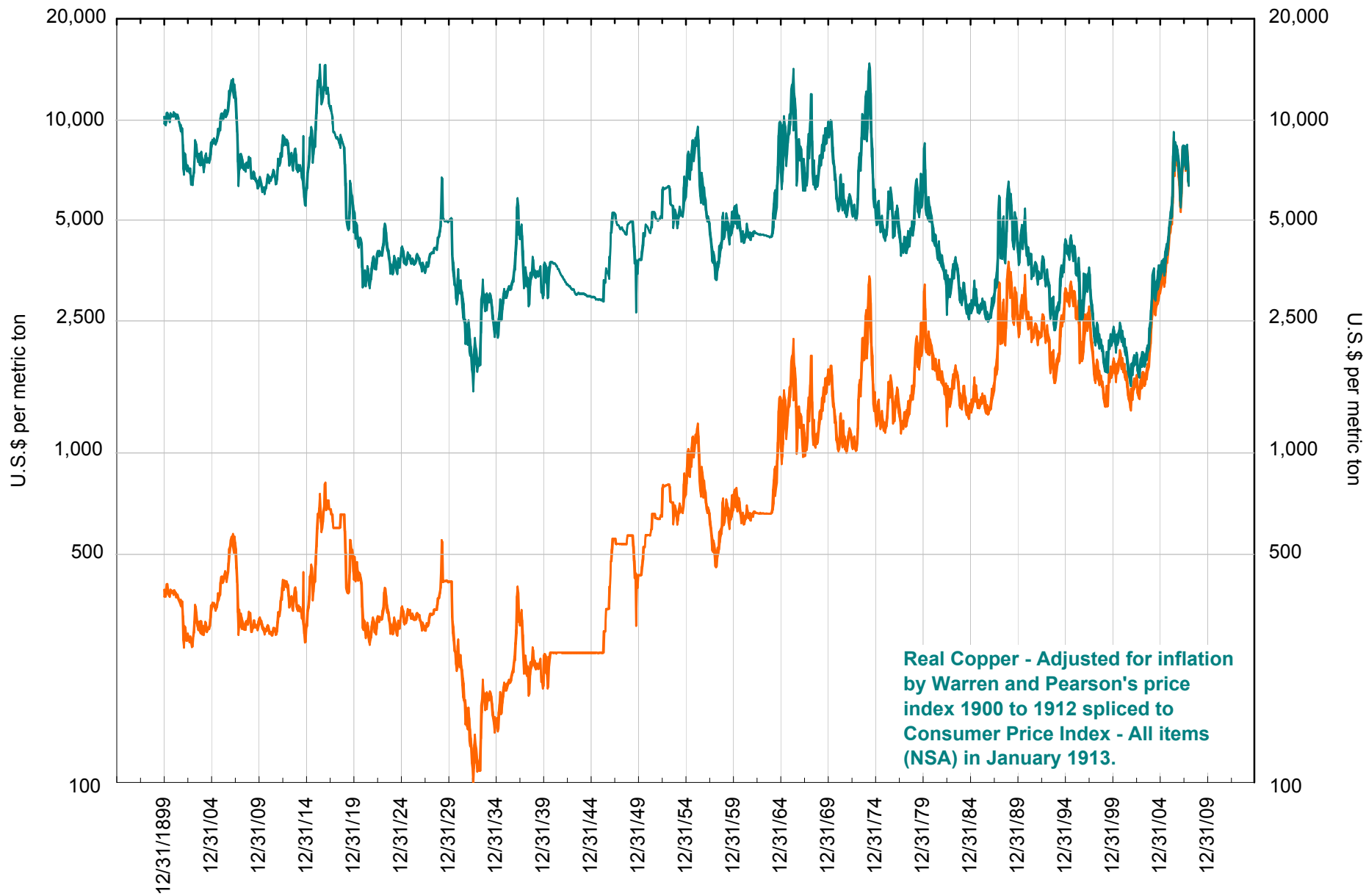
S&P Composite and S&P Composite in Gold \$ (Monthly High/Low)



Standard & Poor's 500 (Monthly - Adjusted for inflation by the CPI - All items)

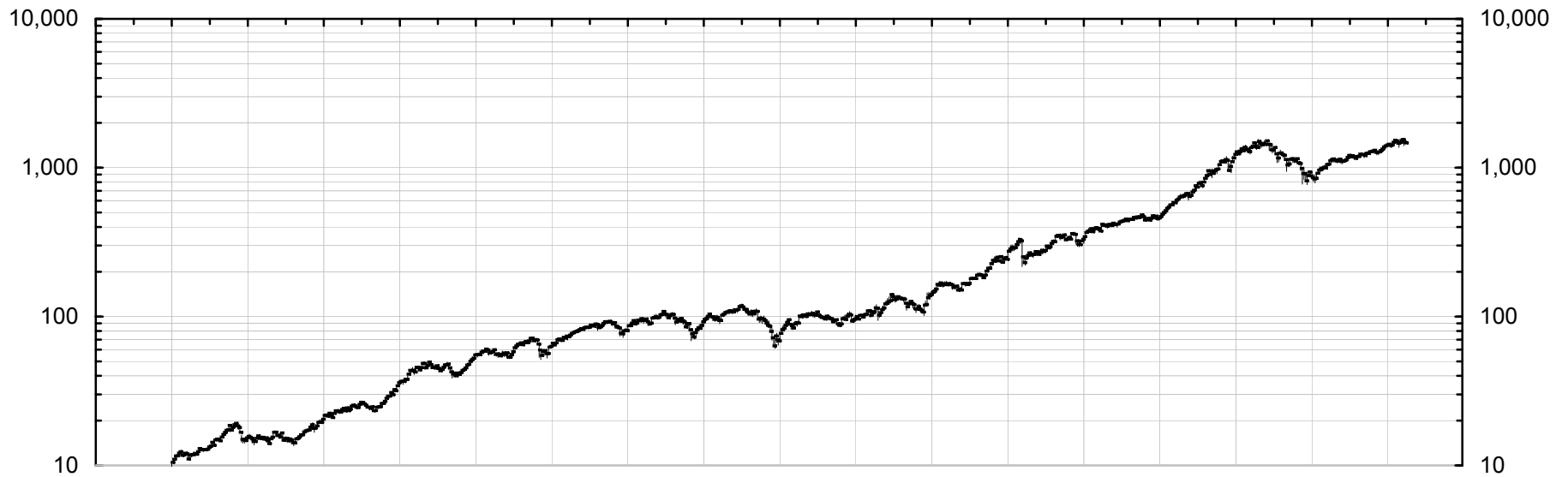


Copper and Real Copper (London Metal Exchange - Monthly Spot High/Low)

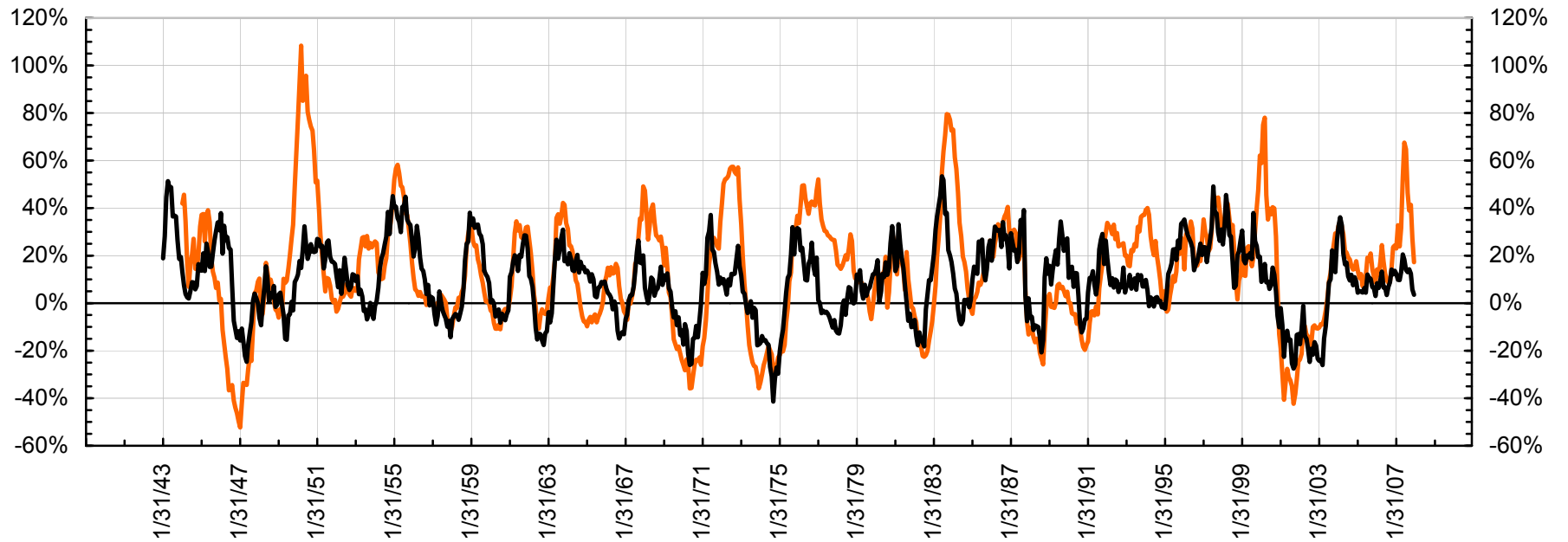


Real Copper - Adjusted for inflation by Warren and Pearson's price index 1900 to 1912 spliced to Consumer Price Index - All items (NSA) in January 1913.

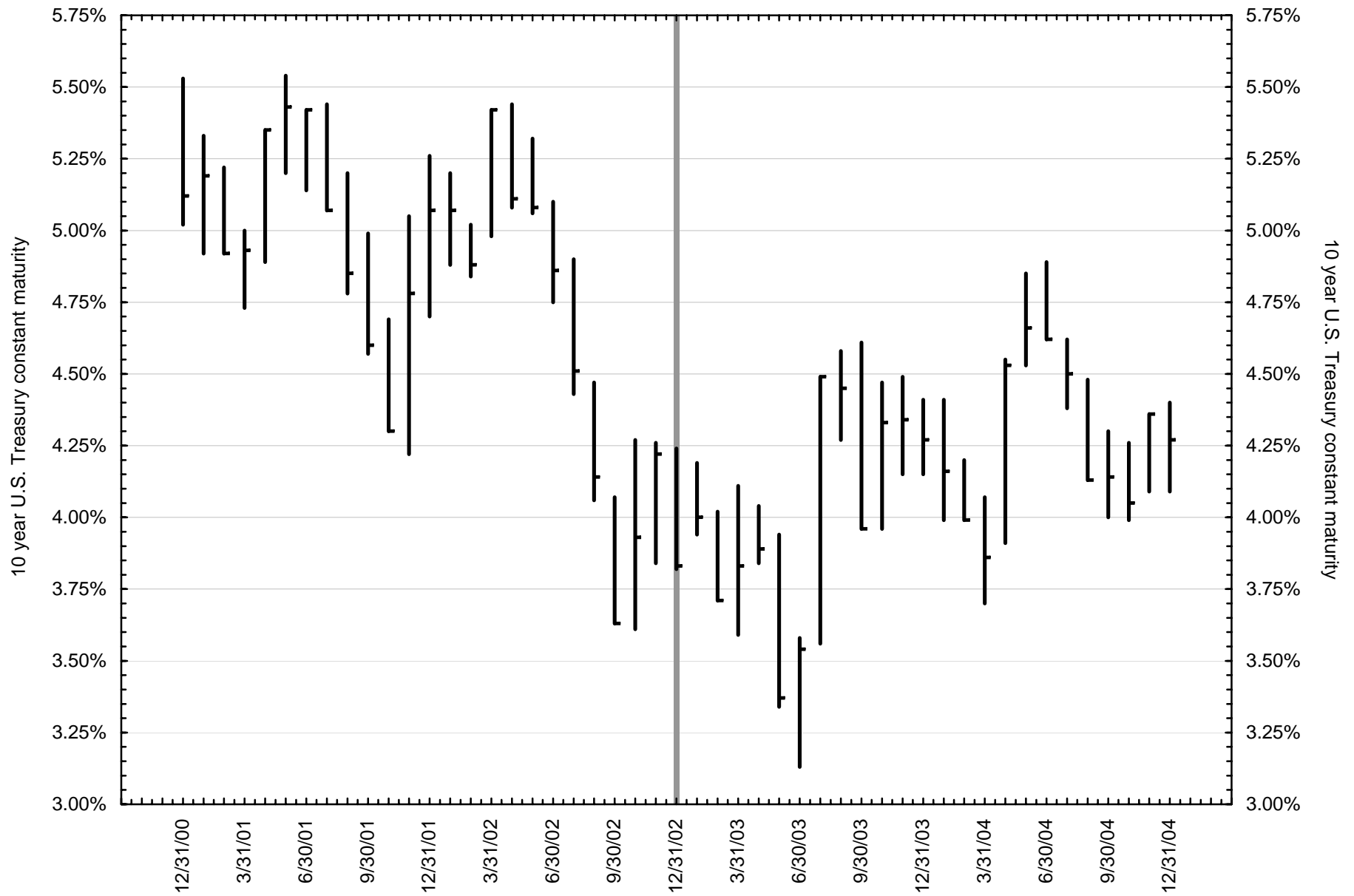
S&P 500 Composite



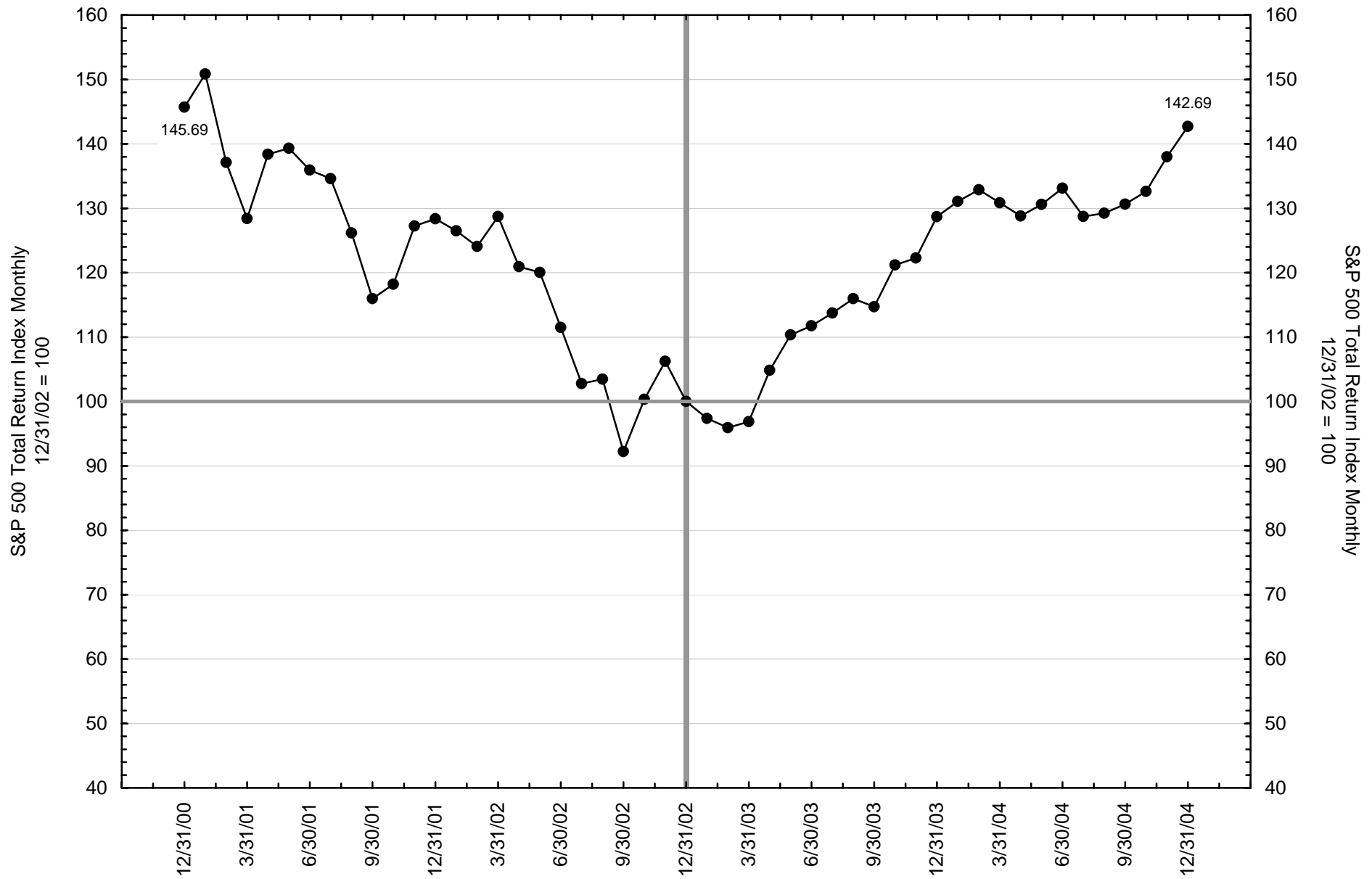
Annual Rate of Change of S&P 500 Composite and Margin Debt



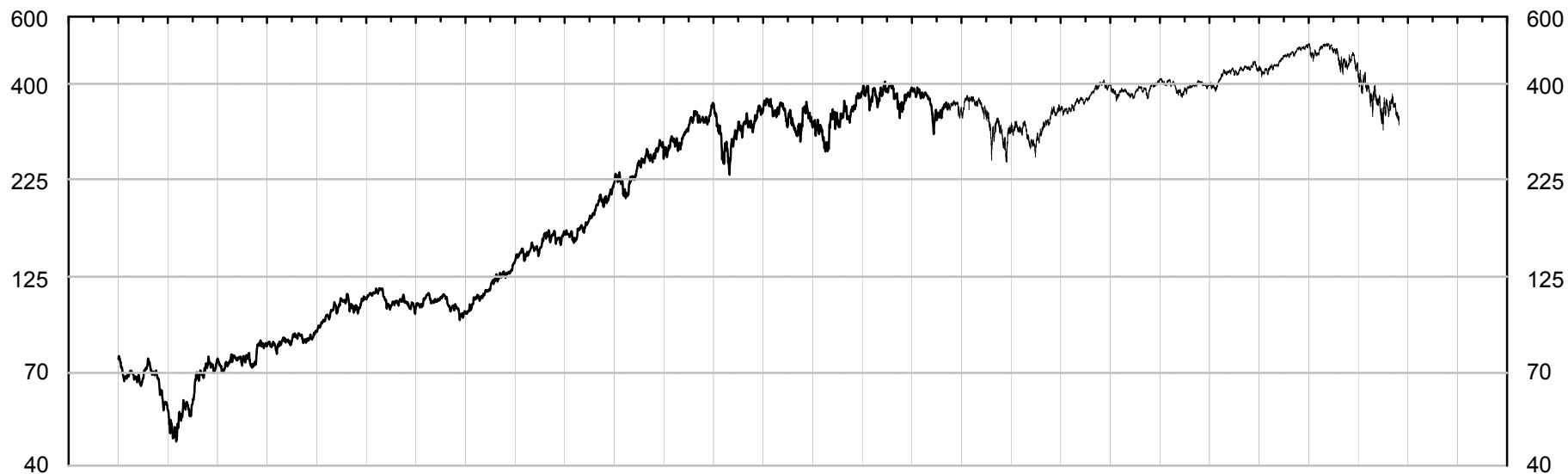
Presidential Cycle of George Bush (R) (first term)



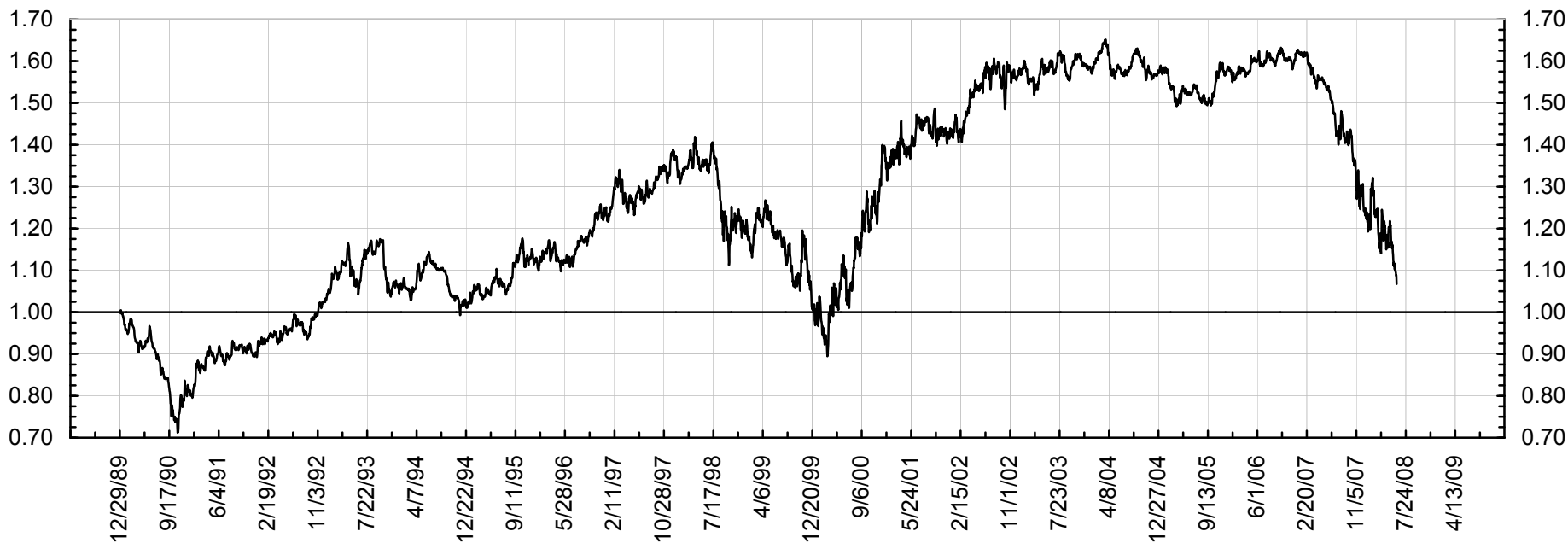
Presidential Cycle of George Bush (first term)



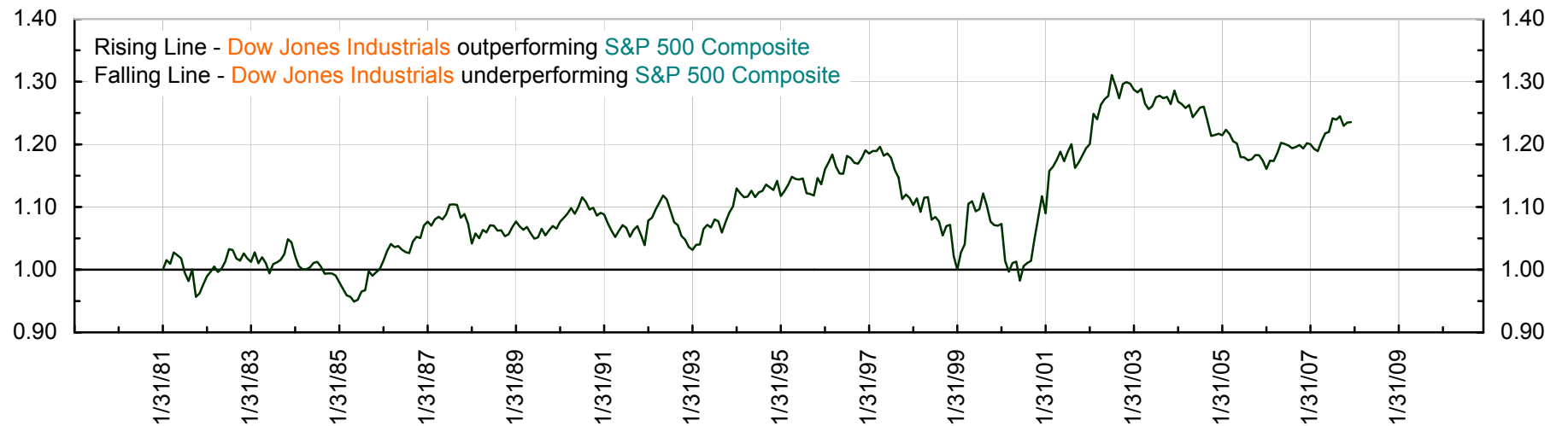
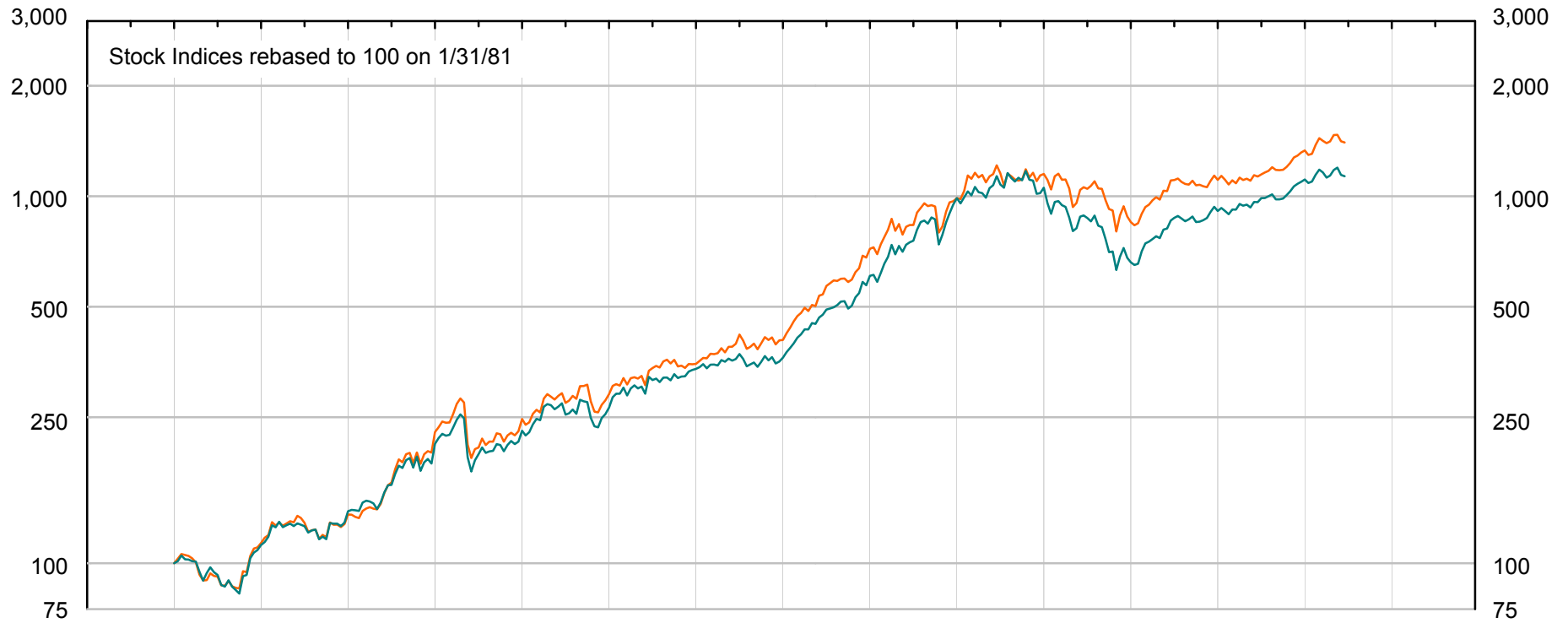
S&P 500 Financials Sector



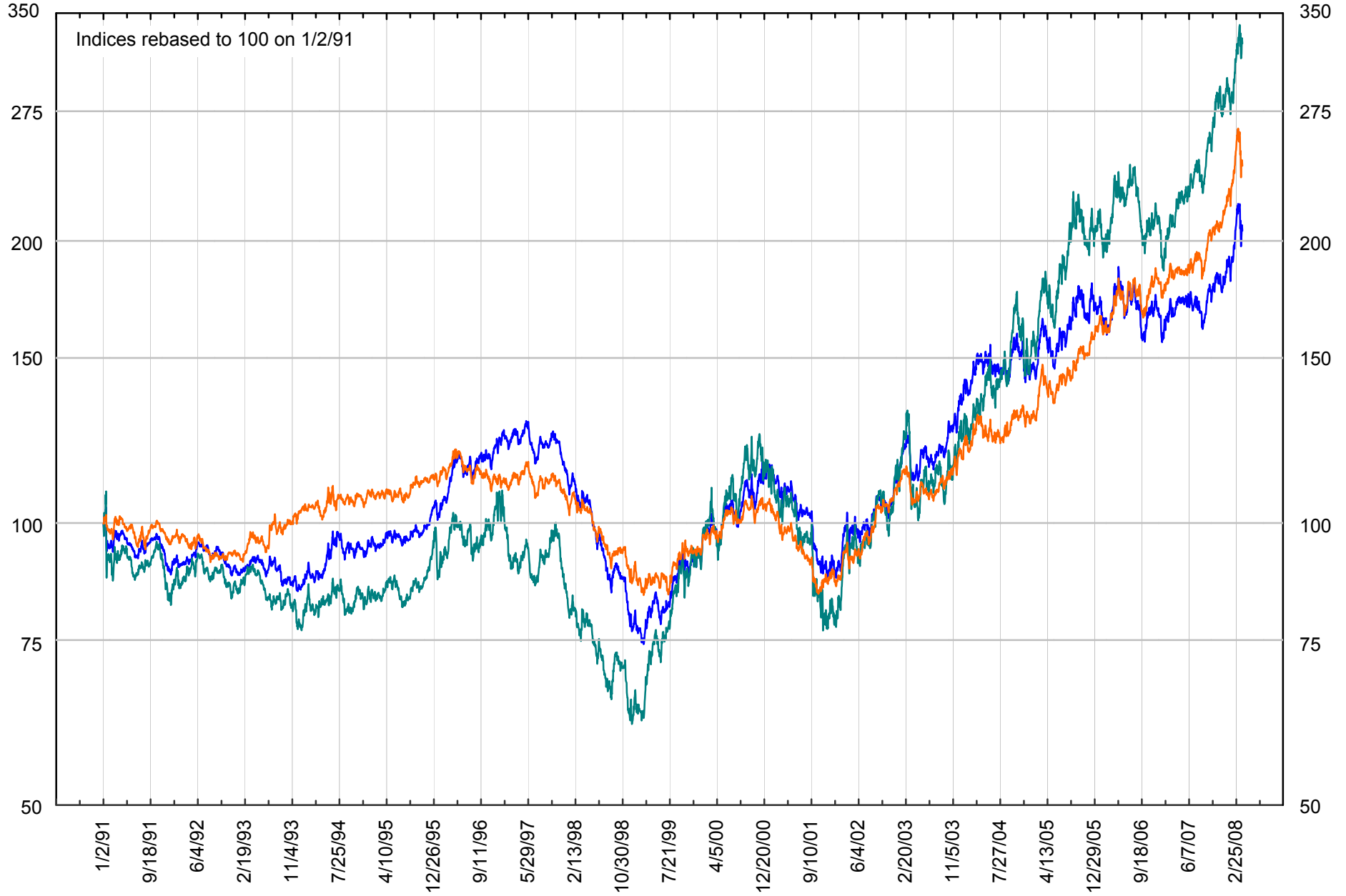
Relative to S&P 500



Dow Jones Industrial Average and S&P 500 Composite

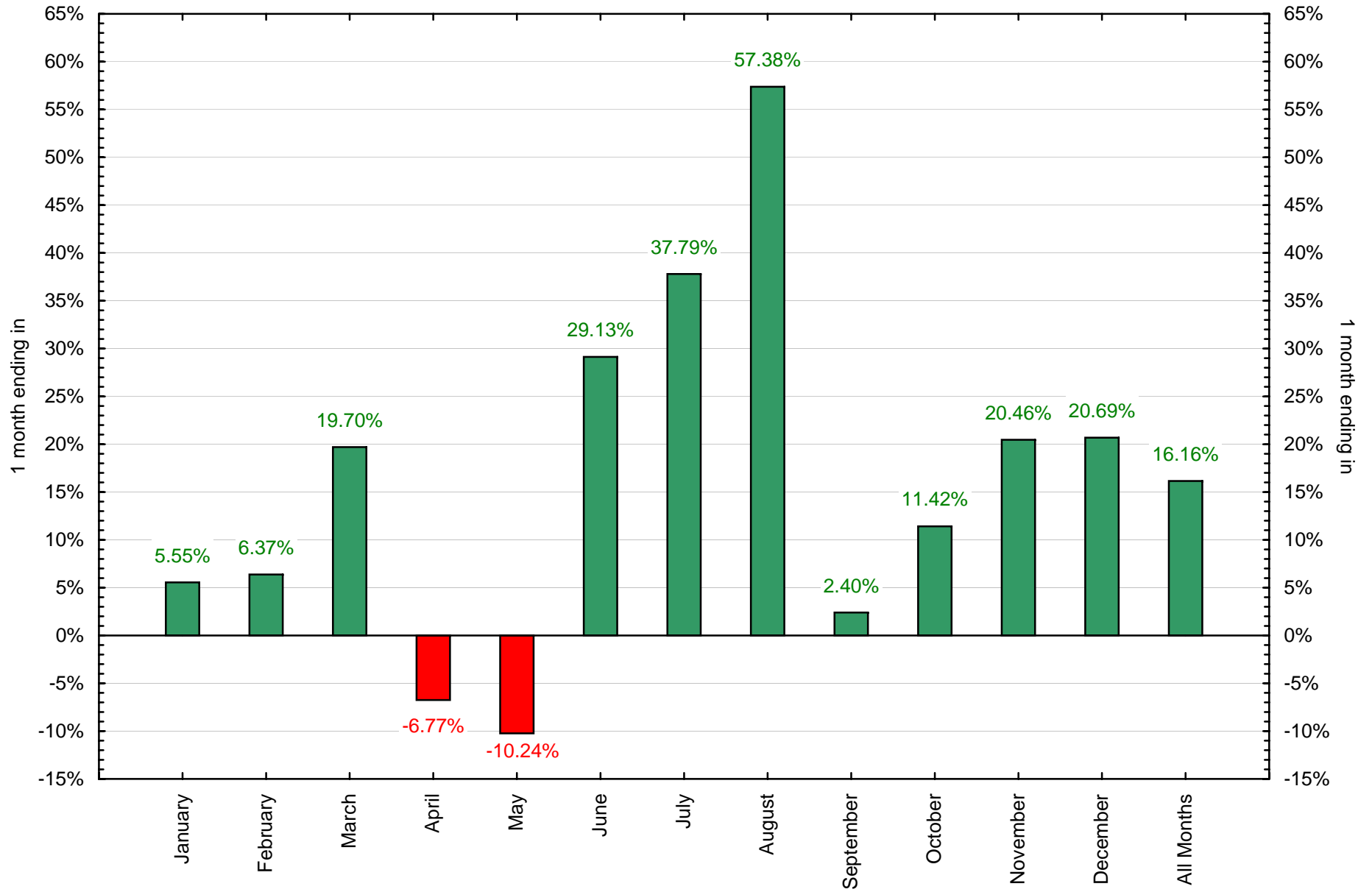


Dow Jones/AIG, S&P GSCI and Reuters/CRB Continuous

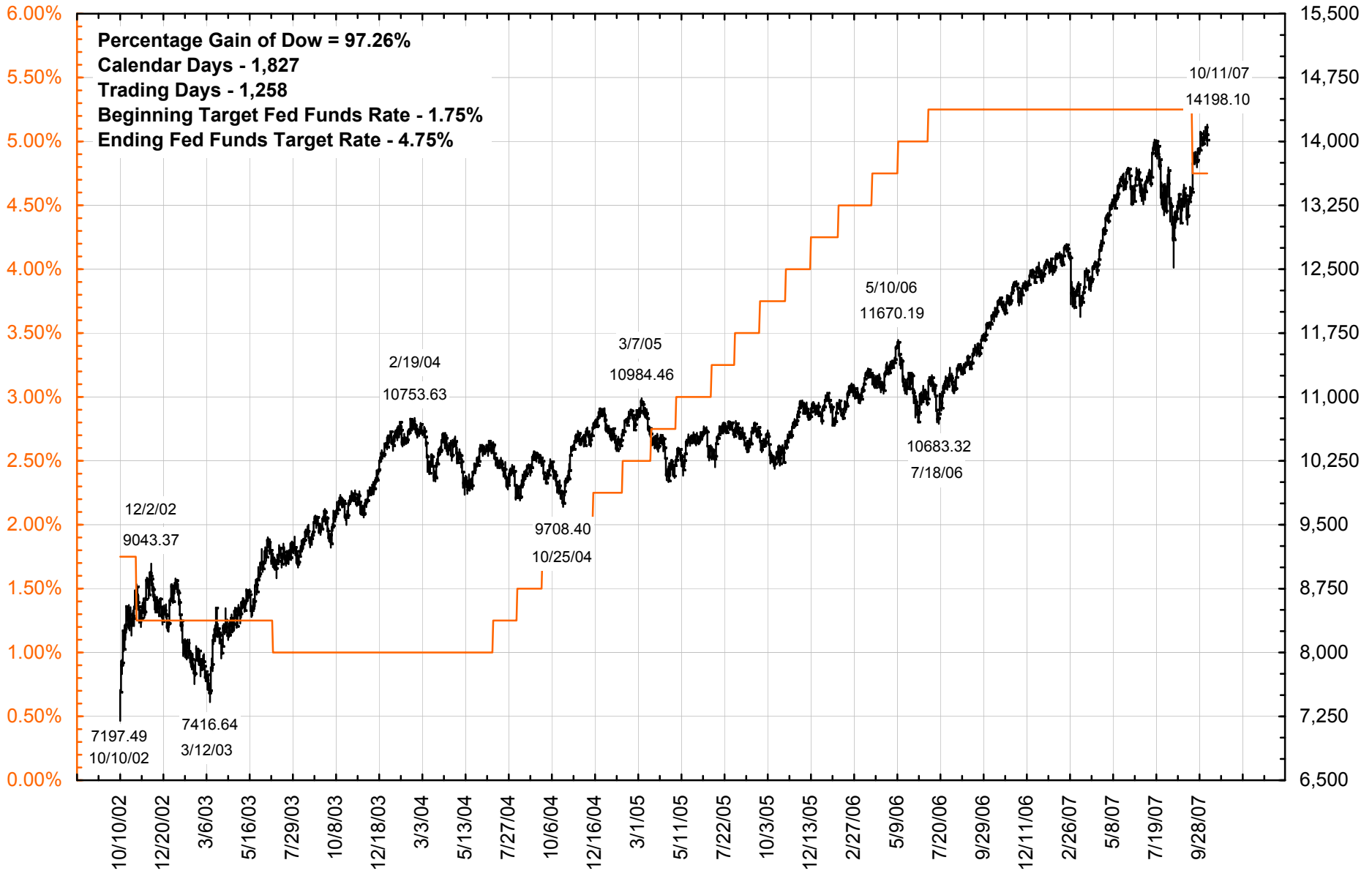


S&P 500 Total Return

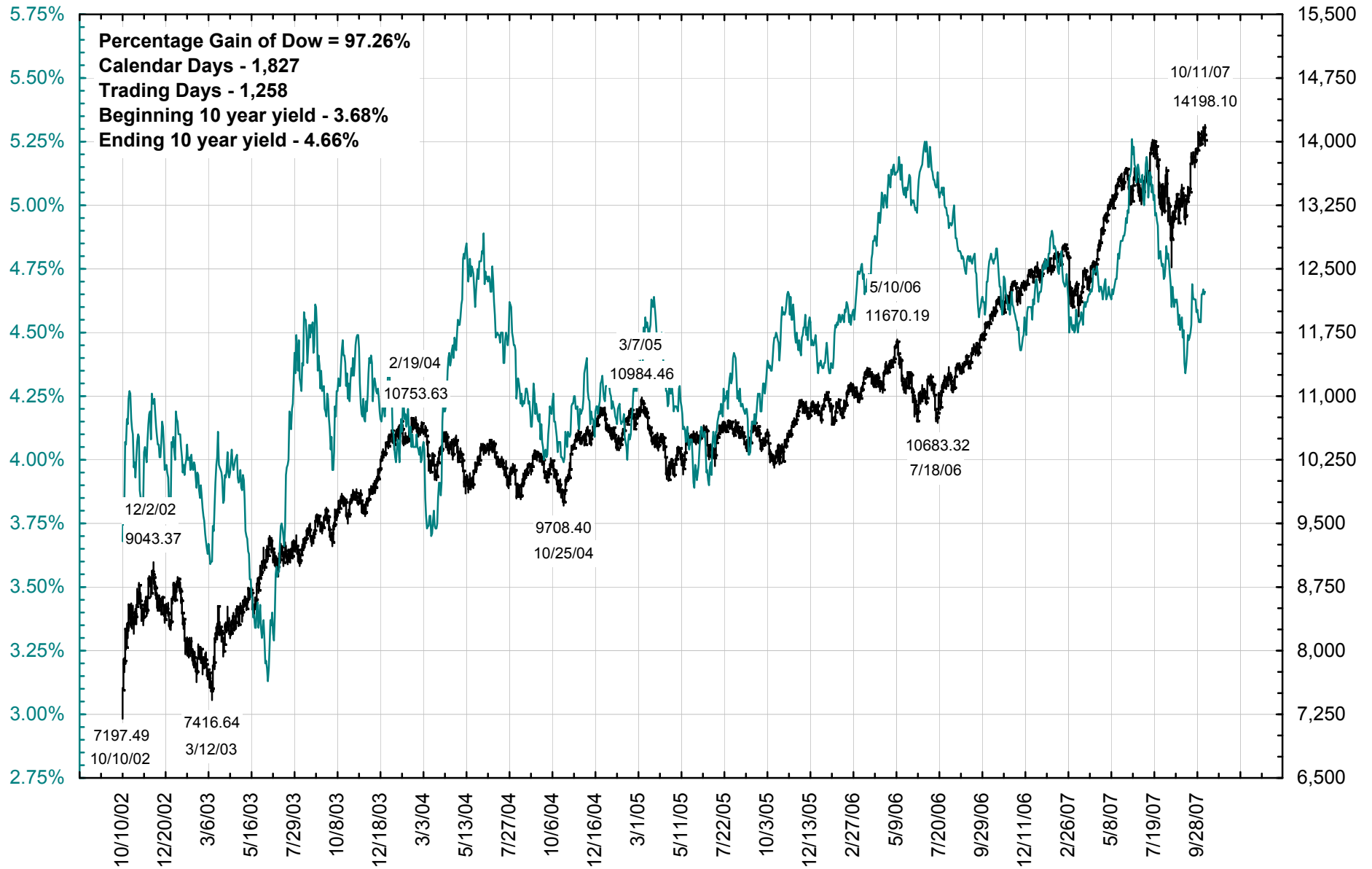
Average 1 month percent change annualized for 19 election years 1928-2000



Dow Jones Industrial Average with the Fed Funds Target Rate



Dow Jones Industrial Average with 10 year U.S. Treasury Yield



Disclaimers and Limitations of Liability. The services and information provided by Thechartstore.com are provided “as is”, without warranty of any kind to subscriber or any third party, including, but not limited to, any express or implied warranties of merchantability or fitness for particular purpose, accuracy of informational content, and non-infringement.

Thechartstore.com shall not be liable to subscriber or any third party for any loss of profits, loss of use, interruption of business, or any direct, indirect, incidental or consequential damages of any kind that may result from the use of this publication by subscriber or any third party, whether under this agreement or otherwise, even if Thechartstore.com was advised of the possibility of such damages or was grossly negligent.

Thechartstore.com has made all reasonable efforts to insure the accuracy of the data on which the graphics presented in this publication have been based, but cannot and does not guarantee the accuracy of such underlying data or statistics.

Thechartstore.com does not promote the use of the information contained herein for any specific purpose, and makes no representations or warranties that the information contained in this publication is suitable for the particular purposes of the subscriber or any other party. Thechartstore.com assumes no responsibility or liability of any kind for the use of the information contained herein by the subscriber or any other party.

Copyright © 2008 Thechartstore.com

Visit our website at:

<http://www.Thechartstore.com>